



MAY 10, 2016

SCHOOL BUILDING COMMITTEE

JCJARCHITECTURE

TODAY'S AGENDA

- Review Schedule
- MSBA Facilities Assessment Subcommittee Update
- Permit Scoping Meeting Update
- Programming Meetings Update
- Fort River ES Student/Parent Community Forum Update
- Preferred Schematic Design Update
- Next Steps



CROCKER FARM



FORT RIVER



WILDWOOD

SCHEDULE

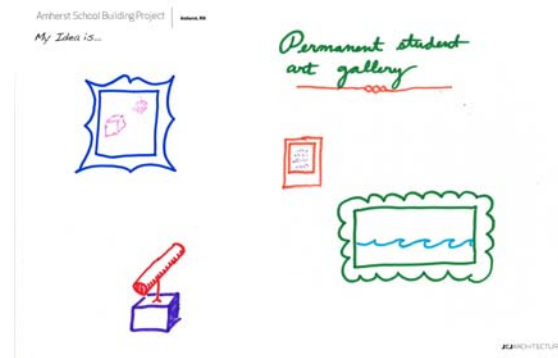
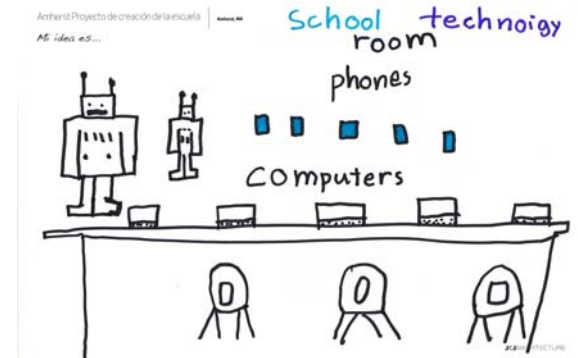
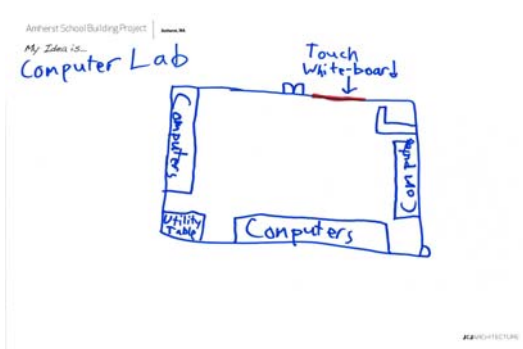
SCHOOL BUILDING PROJECT
SCHOOL COMMITTEE MEETING

SCHOOL BUILDING PROJECT
AMHERST, MASSACHUSETTS

JCJ ARCHITECTURE
MAY 10, 2016

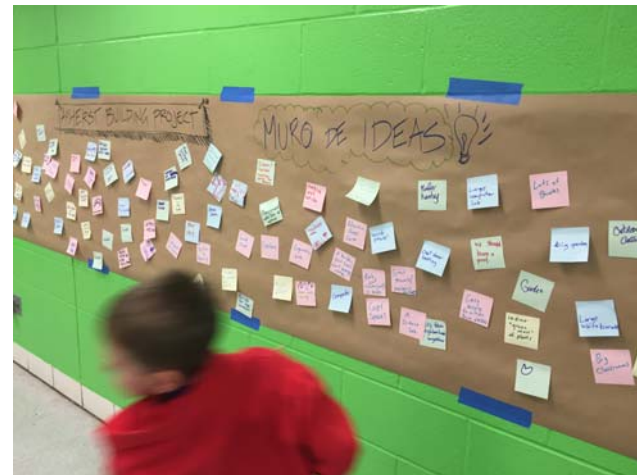
SCHEDULE

- ✓ MSBA Facility Assessment Subcommittee Meeting, Wednesday, April 20, 2016
- ✓ Fort River ES Student/Parent Community Forum, Thursday, May 5, 2016
- **School Building Committee Meeting, Tuesday, May 10, 2016**
Programming, Building Massing, Exterior Character and Finishes
- MSBA Board Meeting, Wednesday, May 25, 2016
- Crocker Farm ES Student/Parent Community Forum, Tuesday, June 8, 2016 (tentative)
- School Building Committee Meeting, Tuesday, May 31, 2016
Building Massing, Exterior Elevations, Preliminary Interior Finishes and Building Systems
- Construction Manager at Risk Interviews, Tuesday, June 14, 2016 (tentative)
- School Building Committee Meeting, Tuesday, June 21, 2016
Schematic Design Estimating Package and CMaR Award
- School Building Committee Meeting, Tuesday, July 26, 2016 (tentative)
Schematic Design Estimate Review
- School Building Committee Meeting, Tuesday, August 2, 2016
Schematic Design Estimate Review
- Schematic Design Report Submission to MSBA, Thursday, August 11, 2016
- MSBA Project Scope & Budget Conference, September 2016 (to be confirmed)
- MSBA Board Meeting, Wednesday, September 28, 2016
- Debt Exclusion Vote, Tuesday, November 8, 2016
- Town Meeting to Approve Project, November 2016 (to be confirmed)
- MSBA Project Funding Agreement, November/December 2016 (to be confirmed)



PARENT / STUDENT WORKSHOP

MAY 5, 2016 – AT FORT RIVER ELEMENTARY SCHOOL

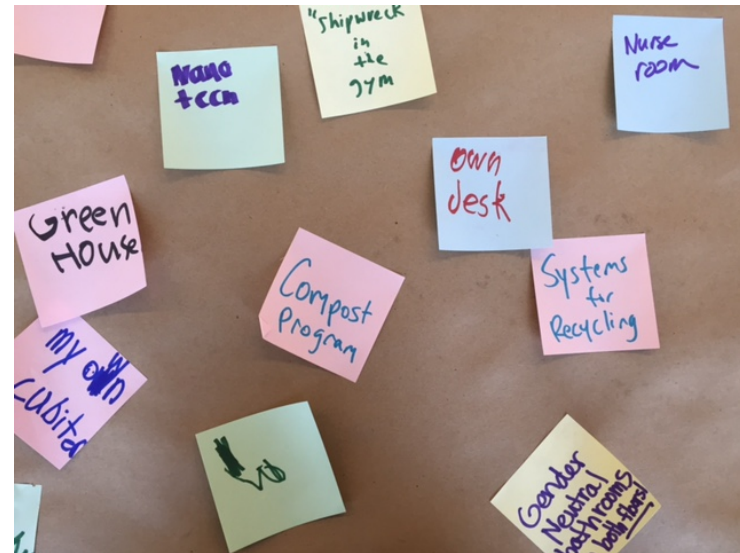
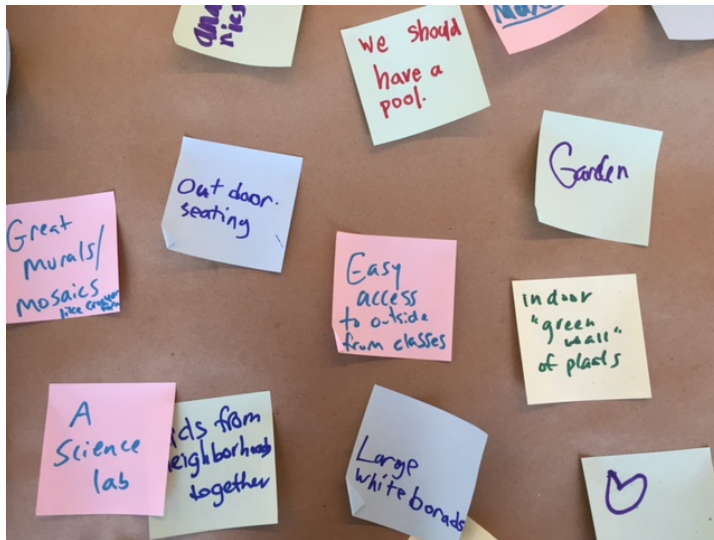


PARENT / STUDENT WORKSHOP

MAY 5, 2016 – AT FORT RIVER ELEMENTARY SCHOOL

SCHOOL BUILDING PROJECT
AMHERST, MASSACHUSETTS

JCJ ARCHITECTURE
MAY 10, 2016



PARENT / STUDENT WORKSHOP

MAY 5, 2016 – AT FORT RIVER ELEMENTARY SCHOOL



CROCKER FARM



FORT RIVER



WILDWOOD

PREFERRED SCHEMATIC DESIGN

SCHOOL BUILDING PROJECT

SCHOOL BUILDING PROJECT
AMHERST, MASSACHUSETTS

JCJ ARCHITECTURE
MAY 10, 2016

OPTION W12R - NEW (750 2-6)



WILDWOOD ELEMENTARY: SITE PLAN

SCHOOL BUILDING PROJECT
AMHERST, MASSACHUSETTS

JCJ ARCHITECTURE
MAY 10, 2016

OPTION W12R – FIRST FLOOR PLAN (CO-LOCATED)

ROOM KEY

ACADEMIC SPACES:

- 1 CLASSROOM (950)
- 2 CLASSROOM (1050)
- 3 ELL (500)

SPED:

- 4 SPED CLASSROOM (950)
- 5 OT/PT (750)
- 6 RESOURCE (250)
- 7 SMALL GROUP (250)
- 8 SPEECH (150)
- 9 SCHOOL ADJUSTMENT COUNSELOR (200)
- 10 SCHOOL PSYCHOLOGIST (150)

CORE SPACES:

- 11 ART (1000)
- 12 MUSIC (1200)
- 13 ENSEMBLE (175)
- 14 GYM (6000)
- 15 MEDIA CENTER
- 16 MAKER SPACE
- 17 CAFETERIA
- 18 KITCHEN
- 19 STAGE

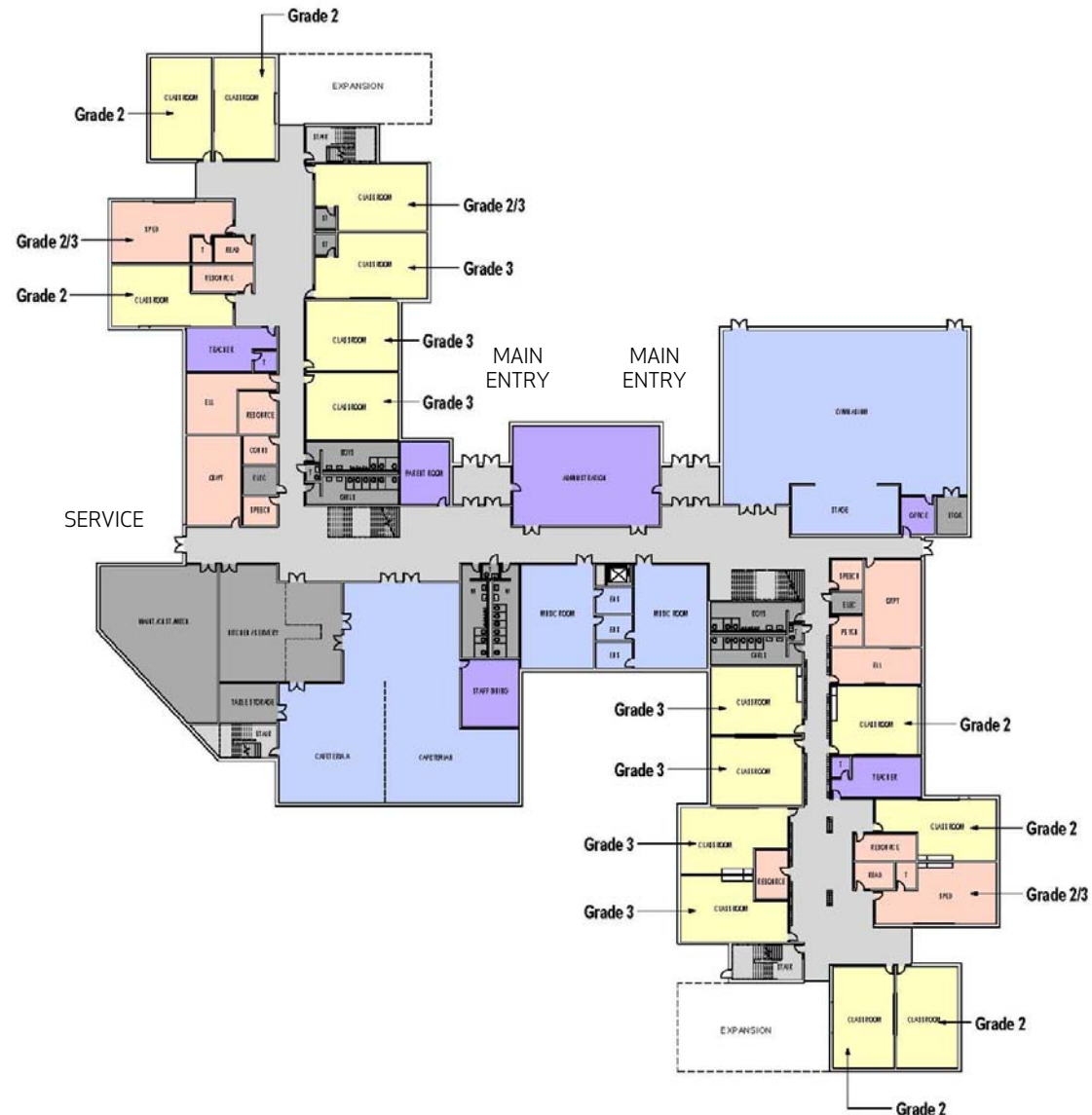
ADMINISTRATION:

- 20 MAIN ADMIN OFFICE
- 21 TEACHER COLLABORATION ROOM
- 22 PARENTS ROOM

LEGEND

- GENERAL CLASSROOMS
- SPECIALIZED CLASSROOMS
- CORE SPACES
- ADMINISTRATIVE / FACULTY
- BUILDING SUPPORT SPACES
- CIRCULATION/STAIRS/ELEVATORS

0 10 20 40 60



OPTION W12R – SECOND FLOOR PLAN (CO-LOCATED)

ROOM KEY

ACADEMIC SPACES:

- 1 CLASSROOM (950)
- 2 CLASSROOM (1050)
- 3 ELL (500)

SPED:

- 4 SPED CLASSROOM (950)
- 5 OT/PT (750)
- 6 RESOURCE (250)
- 7 SMALL GROUP (250)
- 8 SPEECH (150)
- 9 SCHOOL ADJUSTMENT COUNSELOR (200)
- 10 SCHOOL PSYCHOLOGIST (150)

CORE SPACES:

- 11 ART (1000)
- 12 MUSIC (1200)
- 13 ENSEMBLE (175)
- 14 GYM (6000)
- 15 MEDIA CENTER
- 16 MAKER SPACE
- 17 CAFETERIA
- 18 KITCHEN
- 19 STAGE

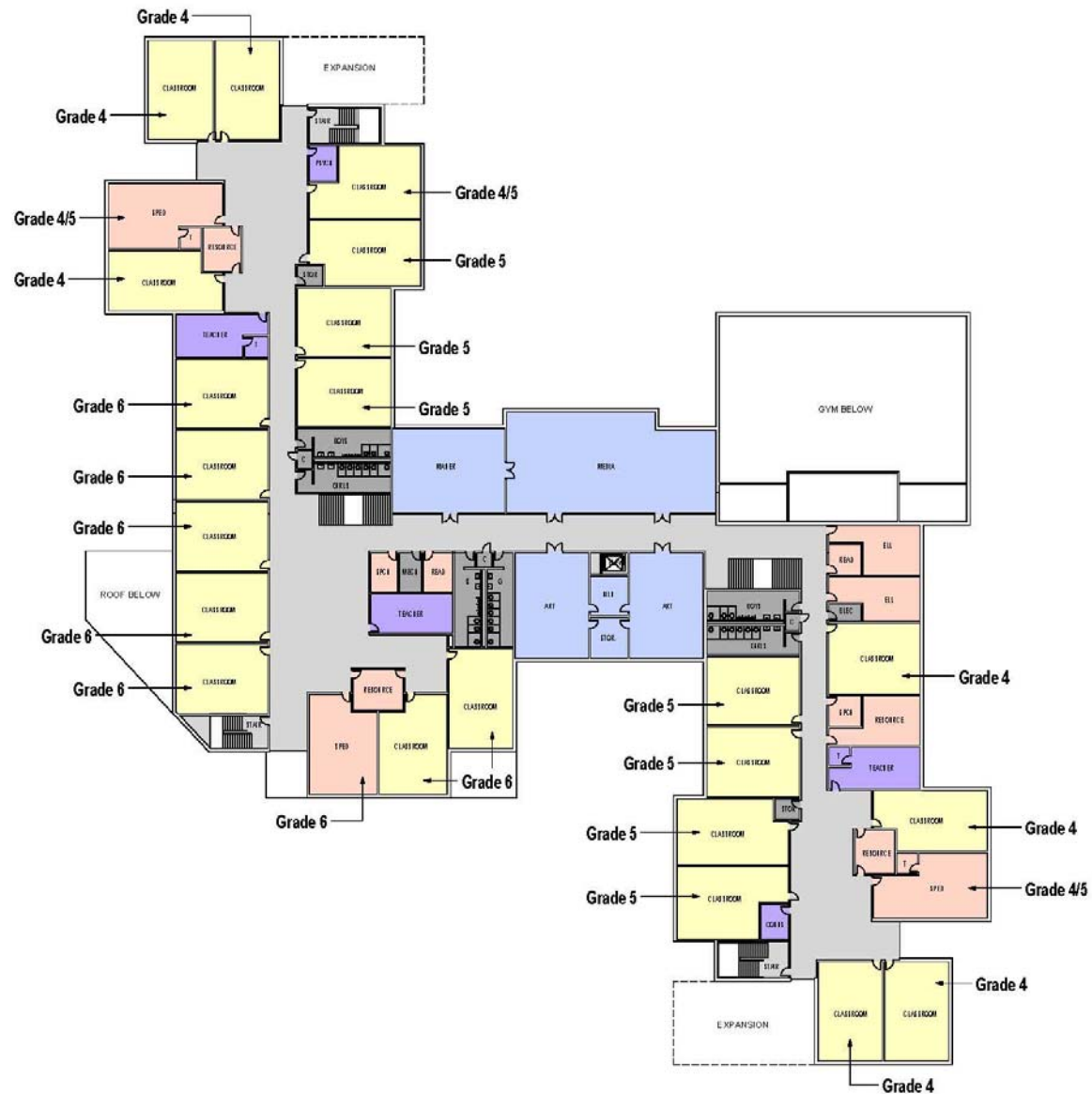
ADMINISTRATION:

- 20 MAIN ADMIN OFFICE
- 21 TEACHER COLLABORATION ROOM
- 22 PARENTS ROOM

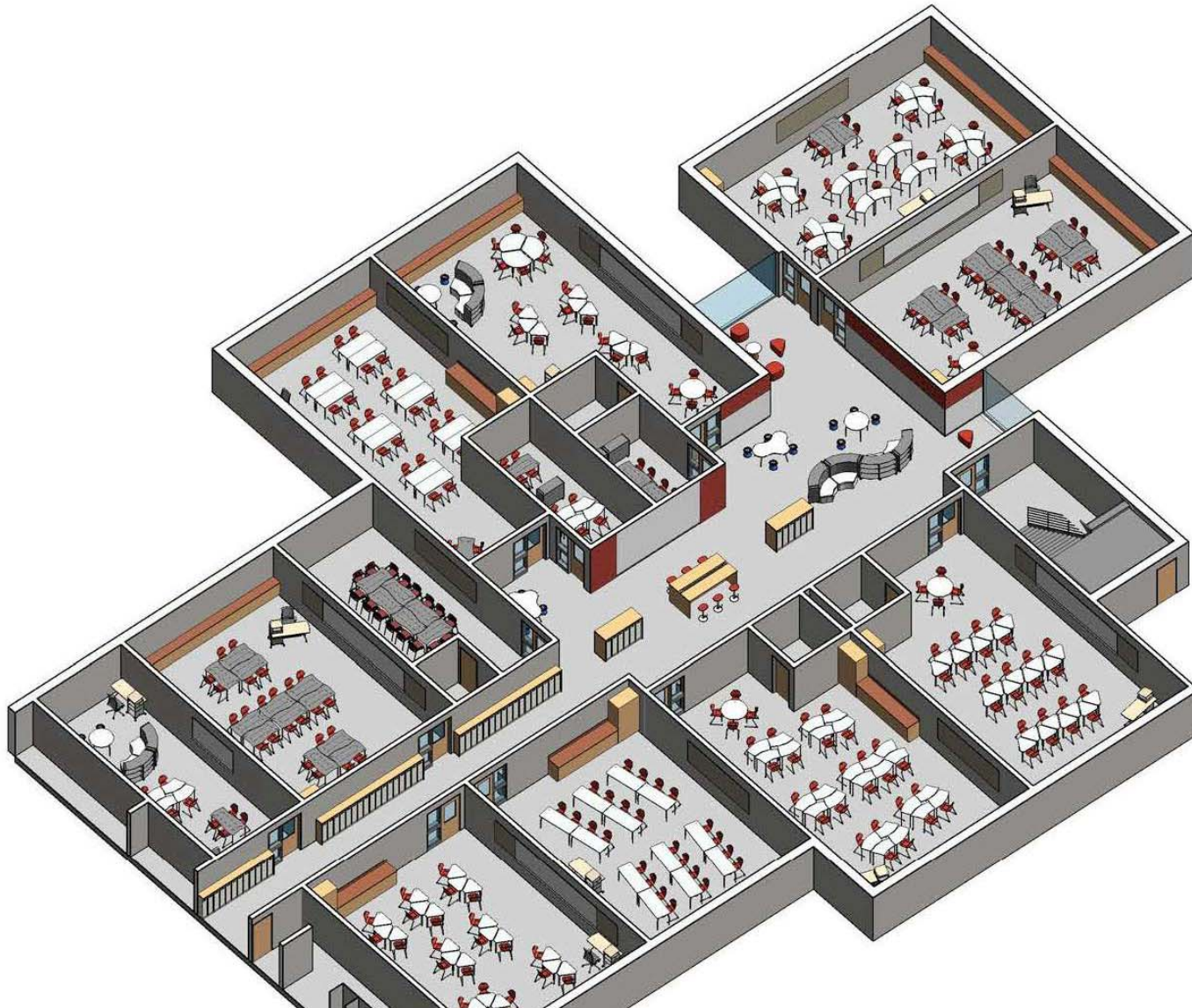
LEGEND

- GENERAL CLASSROOMS
- SPECIALIZED CLASSROOMS
- CORE SPACES
- ADMINISTRATIVE / FACULTY
- BUILDING SUPPORT SPACES
- CIRCULATION/STAIRS/ELEVATORS

0 10 20 40 60



OPTION W12R – BREAK-OUT SPACES



OPTION W12R – BREAK-OUT SPACES



SCHOOL BUILDING PROJECT
AMHERST, MASSACHUSETTS

JCJ ARCHITECTURE
MAY 10, 2016

OPTION W12R – FIRST FLOOR PLAN (CO-LOCATED)

ROOM KEY

ACADEMIC SPACES:

- 1 CLASSROOM (950)
- 2 CLASSROOM (1050)
- 3 ELL (500)

SPED:

- 4 SPED CLASSROOM (950)
- 5 OT/PT (750)
- 6 RESOURCE (250)
- 7 SMALL GROUP (250)
- 8 SPEECH (150)
- 9 SCHOOL ADJUSTMENT COUNSELOR (200)
- 10 SCHOOL PSYCHOLOGIST (150)

CORE SPACES:

- 11 ART (1000)
- 12 MUSIC (1200)
- 13 ENSEMBLE (175)
- 14 GYM (6000)
- 15 MEDIA CENTER
- 16 MAKER SPACE
- 17 CAFETERIA
- 18 KITCHEN
- 19 STAGE

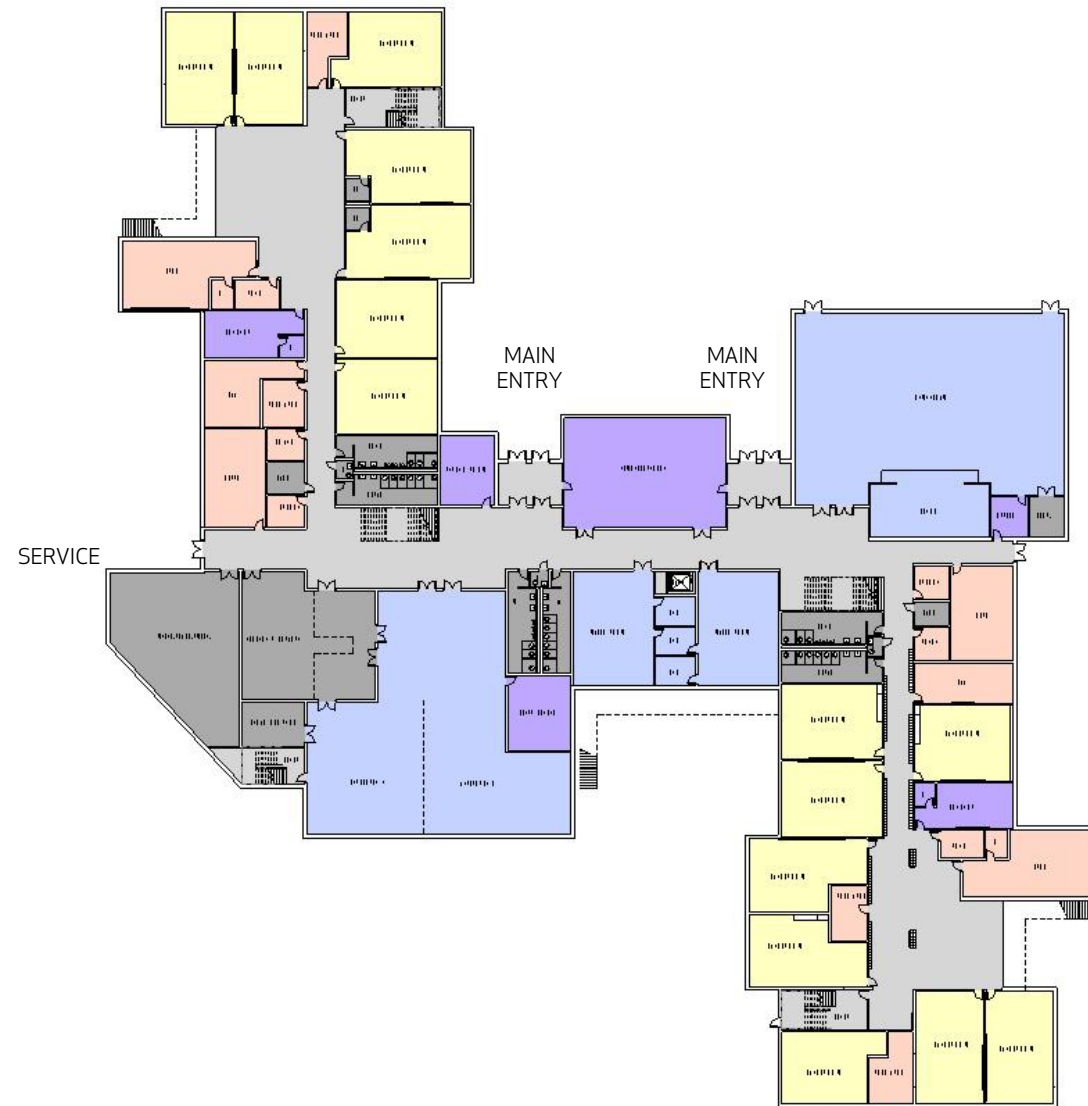
ADMINISTRATION:

- 20 MAIN ADMIN OFFICE
- 21 TEACHER COLLABORATION ROOM
- 22 PARENTS ROOM

LEGEND

- GENERAL CLASSROOMS
- SPECIALIZED CLASSROOMS
- CORE SPACES
- ADMINISTRATIVE / FACULTY
- BUILDING SUPPORT SPACES
- CIRCULATION/STAIRS/ELEVATORS

0 10 20 40 60



OPTION W12R – SECOND FLOOR PLAN (CO-LOCATED)

ROOM KEY

ACADEMIC SPACES:

- 1 CLASSROOM (950)
- 2 CLASSROOM (1050)
- 3 ELL (500)

SPED:

- 4 SPED CLASSROOM (950)
- 5 OT/PT (750)
- 6 RESOURCE (250)
- 7 SMALL GROUP (250)
- 8 SPEECH (150)
- 9 SCHOOL ADJUSTMENT COUNSELOR (200)
- 10 SCHOOL PSYCHOLOGIST (150)

CORE SPACES:

- 11 ART (1000)
- 12 MUSIC (1200)
- 13 ENSEMBLE (175)
- 14 GYM (6000)
- 15 MEDIA CENTER
- 16 MAKER SPACE
- 17 CAFETERIA
- 18 KITCHEN
- 19 STAGE

ADMINISTRATION:

- 20 MAIN ADMIN OFFICE
- 21 TEACHER COLLABORATION ROOM
- 22 PARENTS ROOM

LEGEND

- GENERAL CLASSROOMS
- SPECIALIZED CLASSROOMS
- CORE SPACES
- ADMINISTRATIVE / FACULTY
- BUILDING SUPPORT SPACES
- CIRCULATION/STAIRS/ELEVATORS

0 10 20 40 60



OPTION W12R – SITE PLAN



WILDWOOD ELEMENTARY: SITE PLAN

SCHOOL BUILDING PROJECT
AMHERST, MASSACHUSETTS

JCJ ARCHITECTURE
MAY 10, 2016

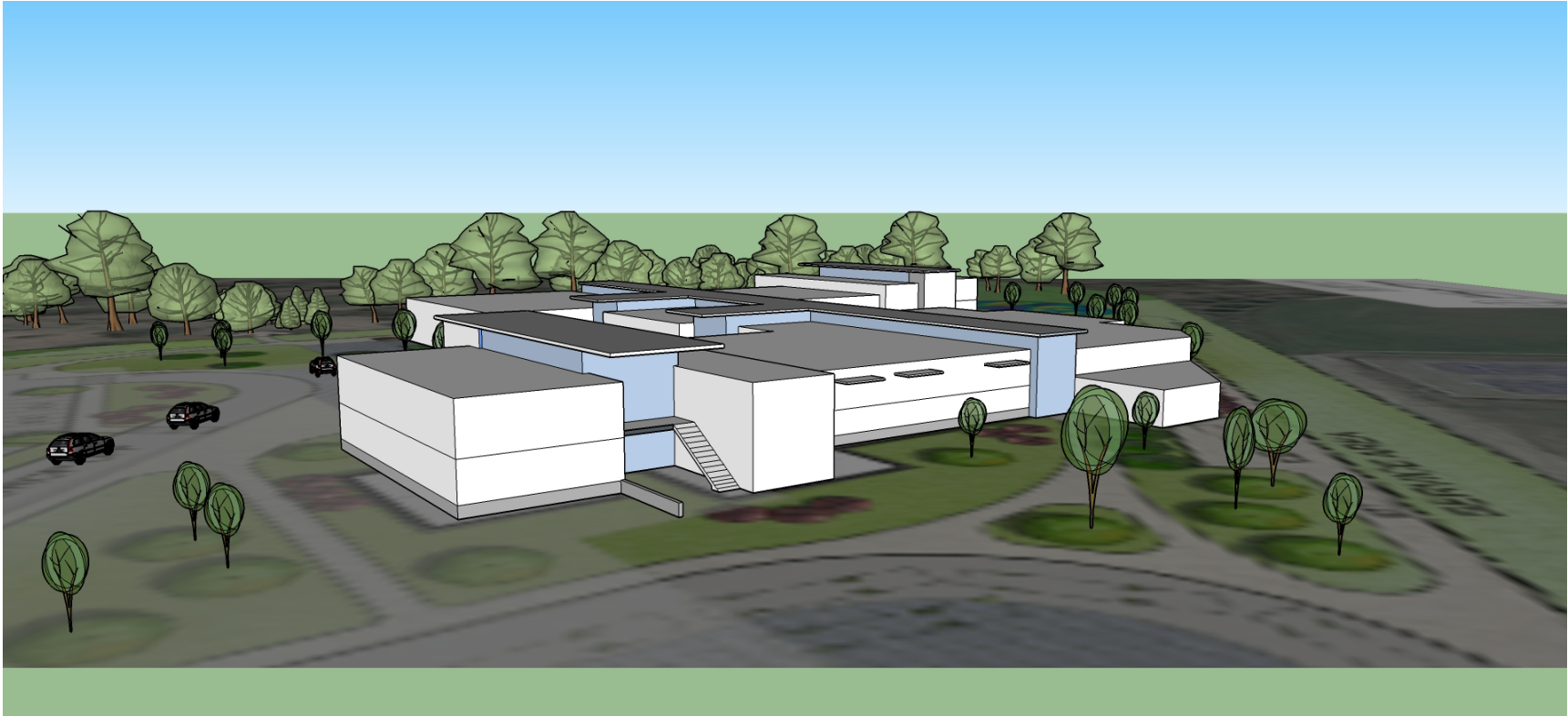
OPTION W12R – CONNECTING THE SITE



OPTION W12R – CONNECTING THE SITE



OPTION W12R – MASSING STUDY



OPTION W12R – EXTERIOR CHARACTER



SCHOOL BUILDING PROJECT
AMHERST, MASSACHUSETTS

JCJARCHITECTURE
MAY 10, 2016

OPTION W12R – EXTERIOR CHARACTER



OPTION W12R – EXTERIOR CHARACTER



SCHOOL BUILDING PROJECT
AMHERST, MASSACHUSETTS

JCJARCHITECTURE
MAY 10, 2016