



MAY 31, 2016

SCHOOL BUILDING COMMITTEE

JCJARCHITECTURE

TODAY'S AGENDA

- Review Schedule
- Schematic Design Update
 - Site Survey
 - Traffic Study
 - Site Plan
 - Floor Plan
 - Exterior Massing and Character
 - Interior Character
 - Program Data Sheets
- Next Steps

SCHEDULE

- ✓ MSBA Facility Assessment Subcommittee Meeting, Wednesday, April 20, 2016
- ✓ Fort River ES Student/Parent Community Forum, Thursday, May 5, 2016
- ✓ School Building Committee Meeting, Tuesday, May 10, 2016
 - Programming, Building Massing, Exterior Character and Finishes
- ✓ MSBA Board Meeting, Wednesday, May 25, 2016
- ✓ **School Building Committee Meeting, Tuesday, May 31, 2016**
 - Building Massing, Exterior Elevations and Room Data Sheets
- Crocker Farm ES Student/Parent Community Forum, Tuesday, June 8, 2016
- Construction Manager at Risk Interviews, Tuesday, June 14, 2016
- School Building Committee Meeting, Tuesday, June 21, 2016
 - Schematic Design Estimating Package and CMaR Award
- School Building Committee Meeting, Tuesday, July 26, 2016 (tentative)
 - Schematic Design Estimate Review
- School Building Committee Meeting, Tuesday, August 2, 2016
 - Schematic Design Estimate Review
- Schematic Design Report Submission to MSBA, Thursday, August 11, 2016
- MSBA Project Scope & Budget Conference, September 2016 (to be confirmed)
- MSBA Board Meeting, Wednesday, September 28, 2016
- Debt Exclusion Vote, Tuesday, November 8, 2016
- Town Meeting to Approve Project, November 2016 (to be confirmed)
- MSBA Project Funding Agreement, November/December 2016 (to be confirmed)

SCHEDULE

- ✓ SBC Sustainability Working Group Meeting, Monday, May 16, 2016
- ✓ SBC Security Working Group Meeting, Monday, May 23, 2016
- ✓ SBC Sustainability Working Group Conference Call, Tuesday, May 31, 2016
 - HVAC Systems
- Town of Amherst Wetlands Administrator Site Tour, Wednesday, June 1, 2016
- SBC Security Working Group Meeting, Wednesday, June 29, 2016 (to be confirmed)

CONNECTING THE SITE



SCHOOL BUILDING PROJECT
AMHERST, MASSACHUSETTS

JCJARCHITECTURE
MAY 31, 2016

SITE PLAN



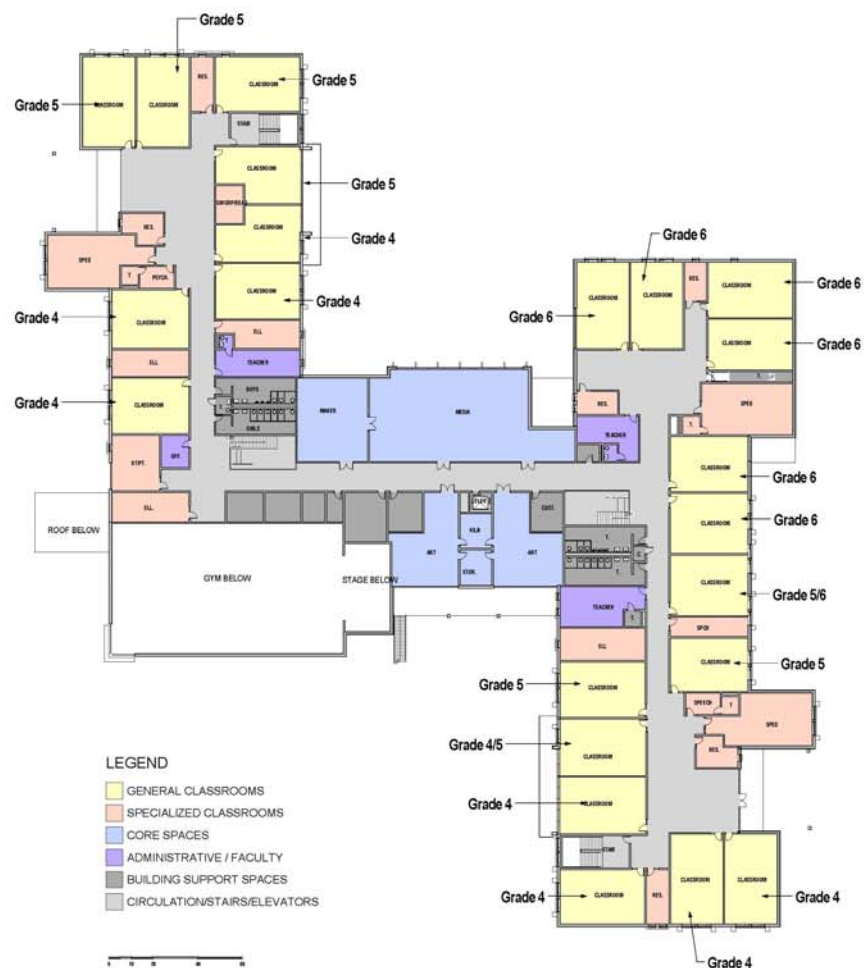
SCHOOL BUILDING PROJECT
AMHERST, MASSACHUSETTS

JCJ ARCHITECTURE
MAY 31, 2016

FLOOR PLANS



1 OPTION W15 - FIRST FLOOR PLAN



EXTERIOR CHARACTER



SCHOOL BUILDING PROJECT
AMHERST, MASSACHUSETTS

JCJ ARCHITECTURE
MAY 31, 2016

OPTION W12R – EXTERIOR CHARACTER



EXTERIOR CHARACTER



SCHOOL BUILDING PROJECT
AMHERST, MASSACHUSETTS

JCJ ARCHITECTURE
MAY 31, 2016

INTERIOR/EXTERIOR CONNECTIONS



SCHOOL BUILDING PROJECT
AMHERST, MASSACHUSETTS

JCJ ARCHITECTURE
MAY 31, 2016

EXTERIOR MATERIAL PRECEDENTS



SCHOOL BUILDING PROJECT
AMHERST, MASSACHUSETTS

MASSING STUDY – WEST ELEVATION



MASSING STUDY – WEST ELEVATION



WITHOUT STAIR

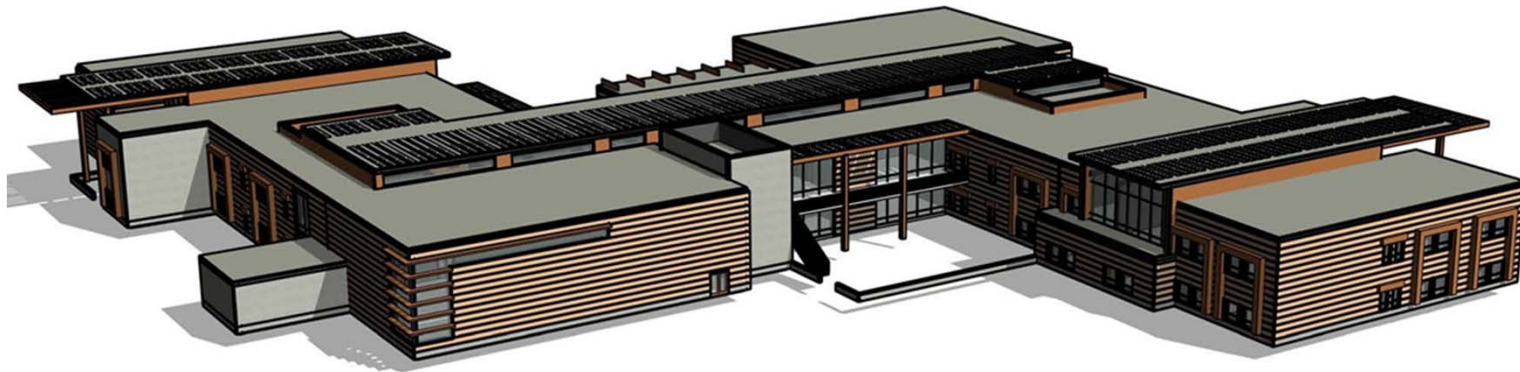


WITH STAIR

MASSING STUDY



NORTH ELEVATION



SOUTH ELEVATION

MASSING STUDY



NORTH ELEVATION



SOUTH ELEVATION

SCHOOL BUILDING PROJECT
AMHERST, MASSACHUSETTS

JCJARCHITECTURE
MAY 31, 2016

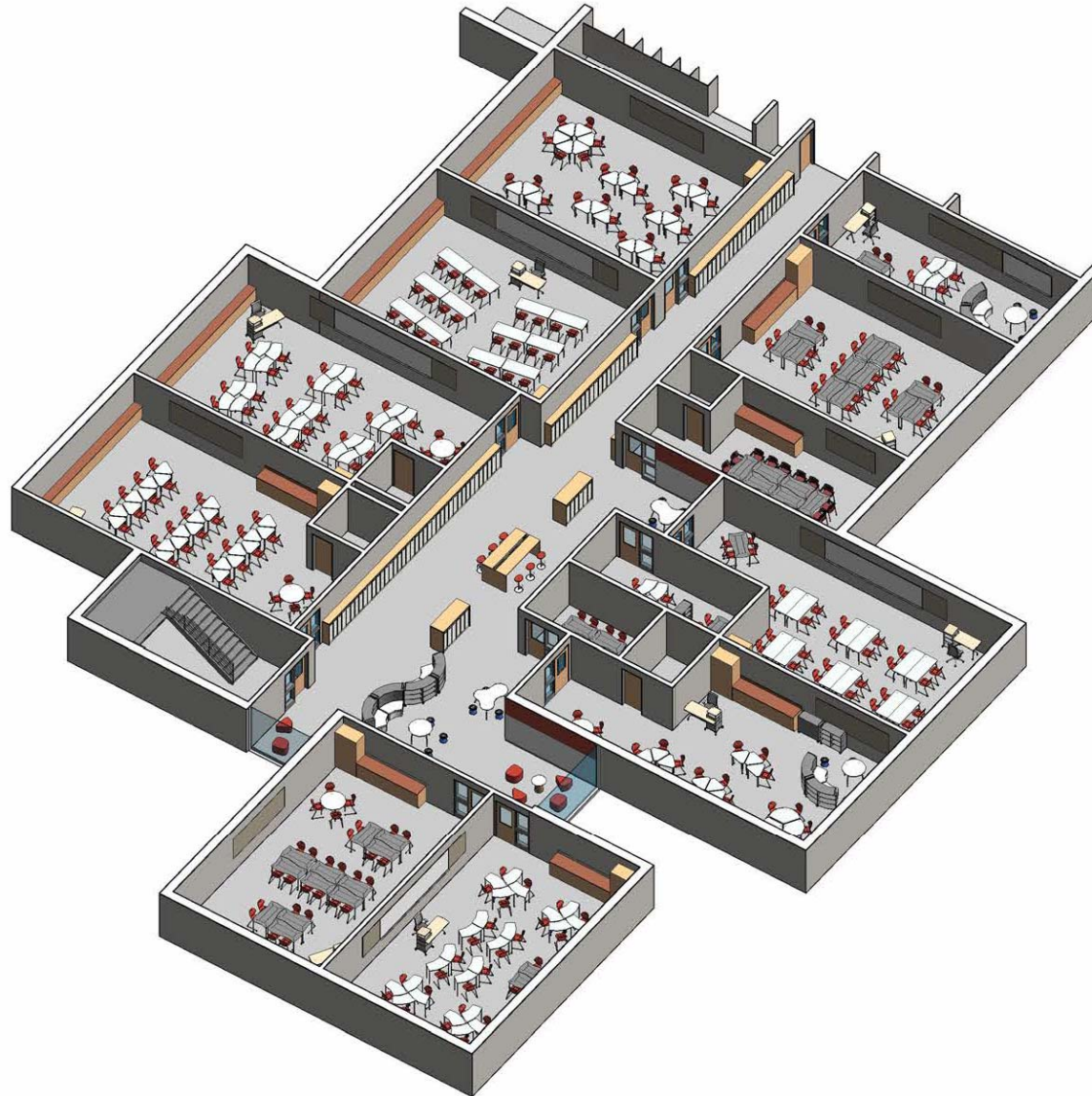
INTERIORS – BREAK-OUT SPACES



SCHOOL BUILDING PROJECT
AMHERST, MASSACHUSETTS

JCJ ARCHITECTURE
MAY 31, 2016

INTERIORS - BREAK-OUT SPACES (OLD)



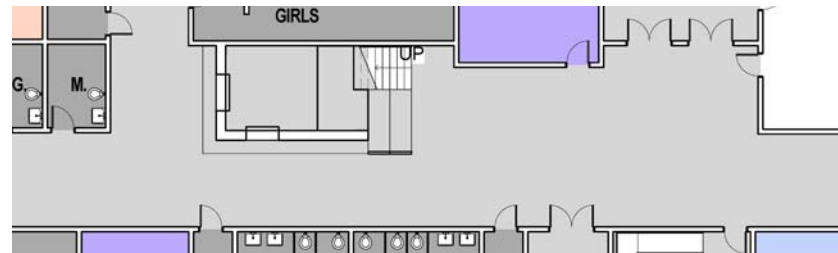
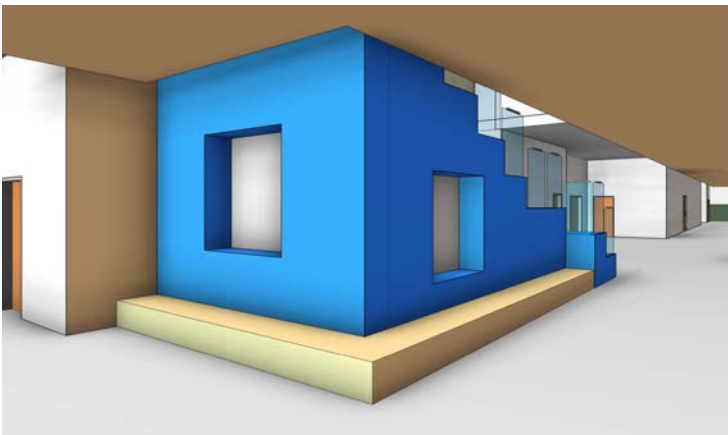
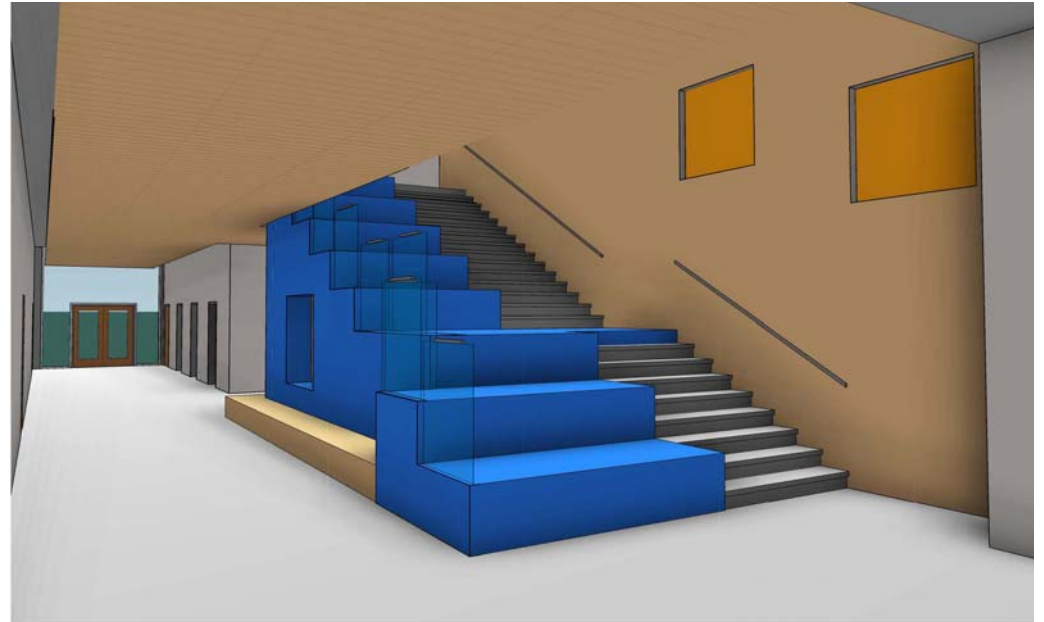
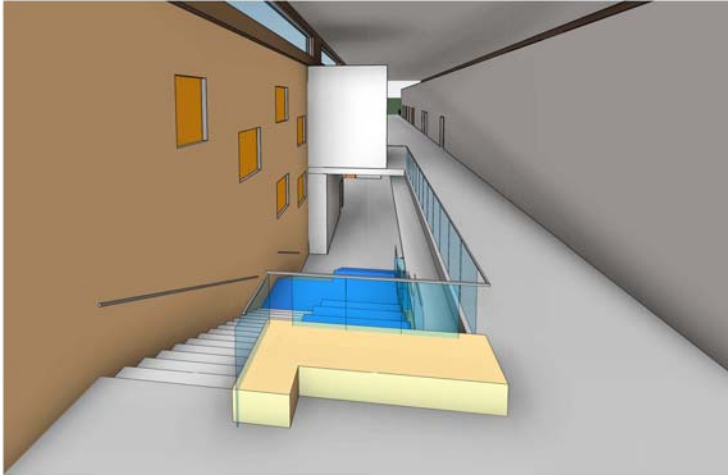
INTERIORS - BREAK-OUT SPACES (NEW)



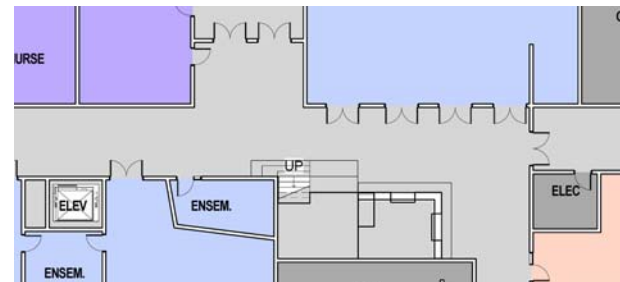
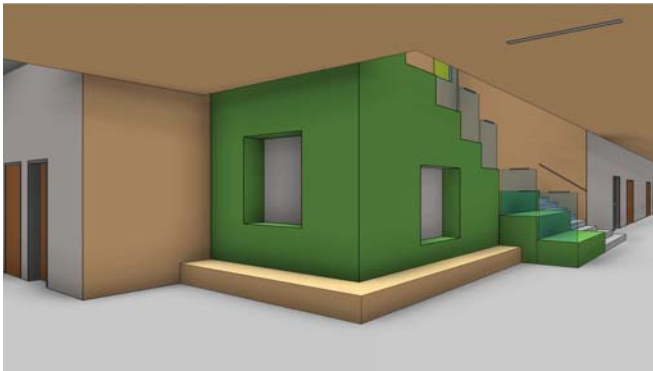
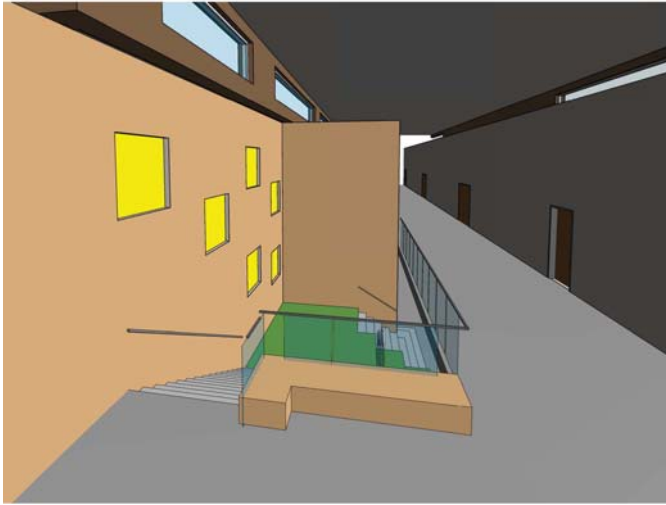
INTERIORS - BREAK-OUT SPACES



INTERIORS – GATHERING STAIR



INTERIORS – GATHERING STAIR



INTERIORS – PROGRAM DATA SHEETS

JCJ ARCHITECTURE

		Wildwood Elementary School AMHERST, MASSACHUSETTS	
May 31, 2016			
SCHEMATIC DESIGN		PROGRAM DATA SHEET	
		General Classrooms - Grades 2-3 Core Academic Space	
Quantity / Floor Area:	15 @ 950 sf	ROOM LAYOUT TO BE INSERTED HERE	
Function / Activities:	Grades 2-3 Classroom Instruction, Individual and Group Activity		
Adjacencies:	Academic Classrooms, Special Education, Resource, ELL Breakout Space		
Ceiling Height:	10'-0"		
Finishes: Floor	Linoleum Tile		
Base	Rubber Cove		
Walls	Paint, Dry Erase Paint at one wall		
Ceiling	2'x2' Suspended Acoustical Ceiling Tile		
Doors	Solid Core Wood w/ Vision Panel		
Frames	Hollow Metal Frame, Frameless Sidelight		
Door Hardware:	Classroom Function Lockset (keyed from both sides)		
Lighting:	Direct/Indirect LED Linear Pendant Fixtures Motion Sensors, Dimmable, Daylight Sensors		
Mobile Equipment/ Furnishings:	Mobile Teacher Desk/Lectern & Task Chair Student Tables/Desks Student Stack Chairs Small Group Tables Mobile Storage Cabinets/Bookcases Area Rug		
Fixed Equipment / Millwork:	9 lin.ft. Millwork w/ Closed Base and Upper Cabinets, 3 lin.ft. Tall Storage Cabinet/Wardrobe ADA Sink (1 H&C Water) Main Teaching Wall: 16 lin.ft Dry Erase Surface / (2) 4'-0" Tackboards, 2" Tackstrip Above (1) 12' Tackboard, (1) 6' Markerboard; 25 lin.ft Bookcases below Windows		
HVAC Requirements:	Operable Windows w/ Screens & Roller Shades Central Heating, Ventilation & Air Conditioning		
Technology Requirements:	Wall Mounted Short Throw Projector, Telephone, Intercom, PA, Fire Alarm, Clock & Bell (1) Teacher Computer Workstation Voice Amplification System Wireless Capability		
Special Features/ Remarks:	12' Frameless Clerestory Windows into Corridor		
Signed: _____		Date: _____	

B10021.00 Program Data SD images_Wildwood-Amherst 5/24/2016

Page 1 of 64

- One sheet for each type of programmed space.
- Documents:
 - Floor Area
 - Function
 - Adjacencies
 - Ceiling Height
 - Interior Finishes
 - Fixed Equipment/Furnishings
 - Mobile Equipment/Furnishings
 - Lighting Requirements
 - HVAC Requirements
 - Technology Requirements
 - Special Features
- Floor Plan Diagram
 - FF&E Layout
- District Sign-off required at completion of Schematic Design.
- Used by estimators to define project scope.