



JUNE 21, 2016

# **BUILDING COMMITTEE MEETING**

**JCJ**ARCHITECTURE

# TODAY'S AGENDA

- Review Schedule
- Schematic Design Update
  - Site Survey
  - Site Plan
  - Floor Plan
  - Exterior Massing and Character
  - Estimating Set – drawings, specifications, system narratives
- Next Steps

# SCHEDULE

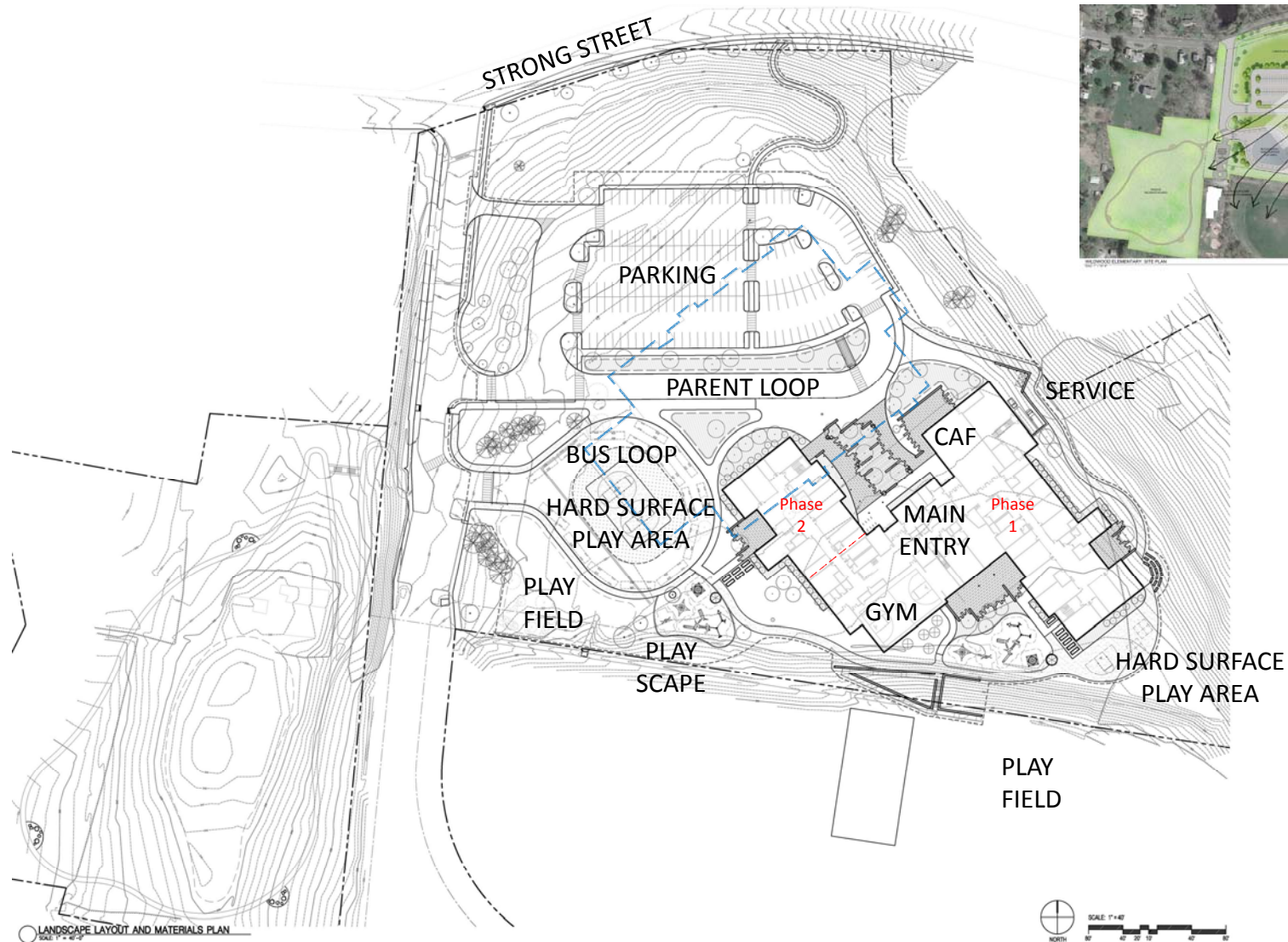
- ✓ MSBA Facility Assessment Subcommittee Meeting, Wednesday, April 20, 2016
- ✓ Fort River ES Student/Parent Community Forum, Thursday, May 5, 2016
- ✓ School Building Committee Meeting, Tuesday, May 10, 2016  
Programming, Building Massing, Exterior Character and Finishes
- ✓ MSBA Board Meeting, Wednesday, May 25, 2016
- ✓ School Building Committee Meeting, Tuesday, May 31, 2016  
Building Massing, Exterior Elevations and Room Data Sheets
- ✓ Crocker Farm ES Student/Parent Community Forum, Tuesday, June 8, 2016
- ✓ Construction Manager at Risk Interviews, Tuesday, June 14, 2016
- School Building Committee Meeting, Tuesday, June 21, 2016  
Schematic Design Estimating Package and CMaR Award
- School Building Committee Meeting, Tuesday, July 26, 2016 (tentative)  
Schematic Design Estimate Review
- School Building Committee Meeting, Tuesday, August 2, 2016  
Schematic Design Estimate Review
- Schematic Design Report Submission to MSBA, Thursday, August 11, 2016
- MSBA Project Scope & Budget Conference, September 2016 (to be confirmed)
- MSBA Board Meeting, Wednesday, September 28, 2016
- Local Approvals, November 2016 (to be confirmed)
- MSBA Project Funding Agreement, November/December 2016 (to be confirmed)

# SCHEDULE

- ✓ SBC Sustainability Working Group Meeting, Monday, May 16, 2016
- ✓ SBC Security Working Group Meeting, Monday, May 23, 2016
- ✓ SBC Sustainability Working Group Conference Call, Tuesday, May 31, 2016  
HVAC Systems
- ✓ Town of Amherst Wetlands Administrator Site Tour, Wednesday, June 1, 2016
- ✓ Meet with Specialized Program Staff, Friday June 10, 2016
- ✓ SBC Sustainability Working Group Conference Call, Tuesday, May 31, 2016
- SBC Security Working Group Meeting, Wednesday, June 29, 2016 (to be confirmed)



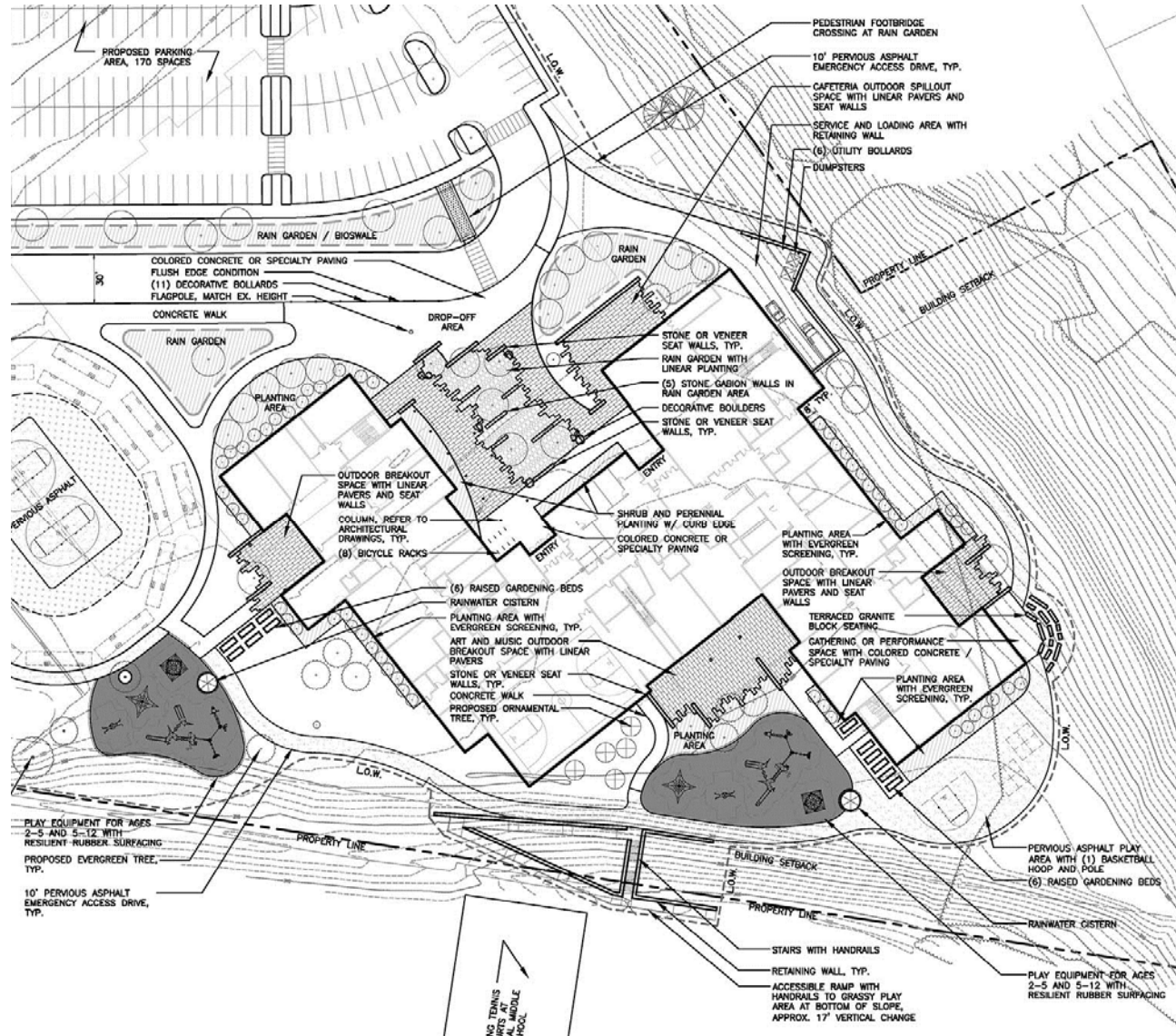
# SITE PLAN



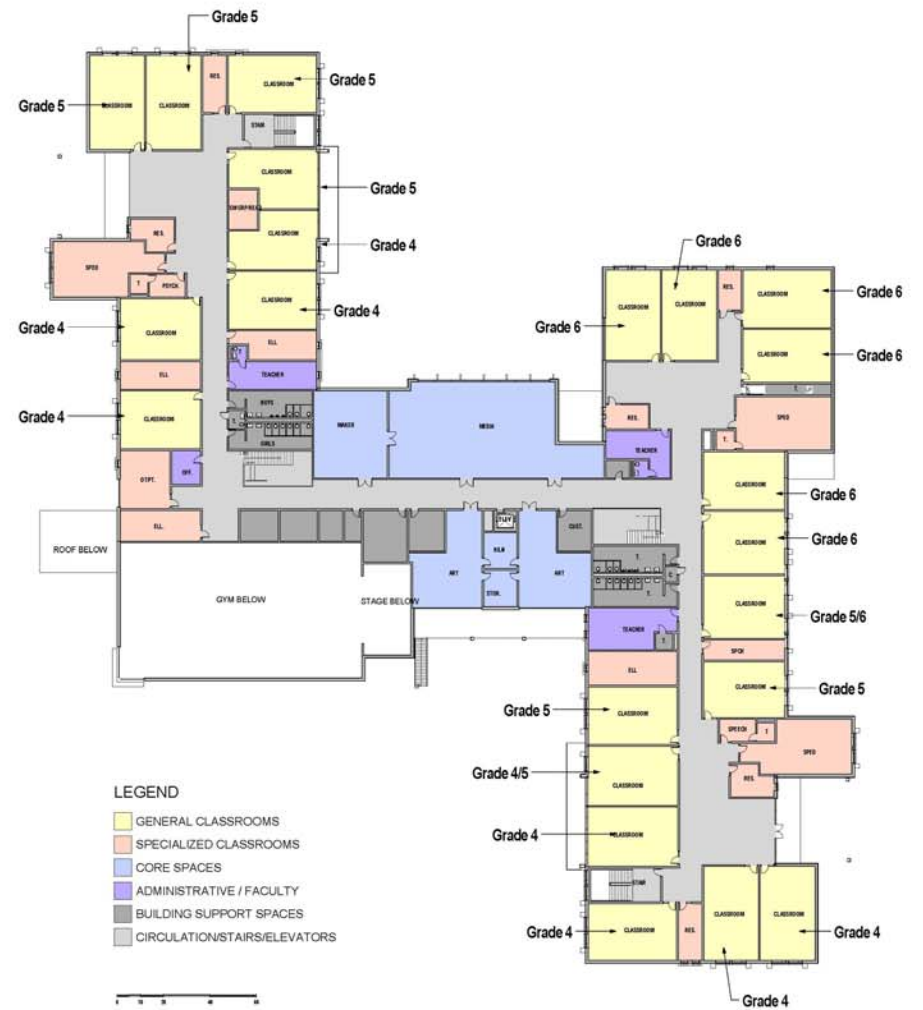




# SITE PLAN

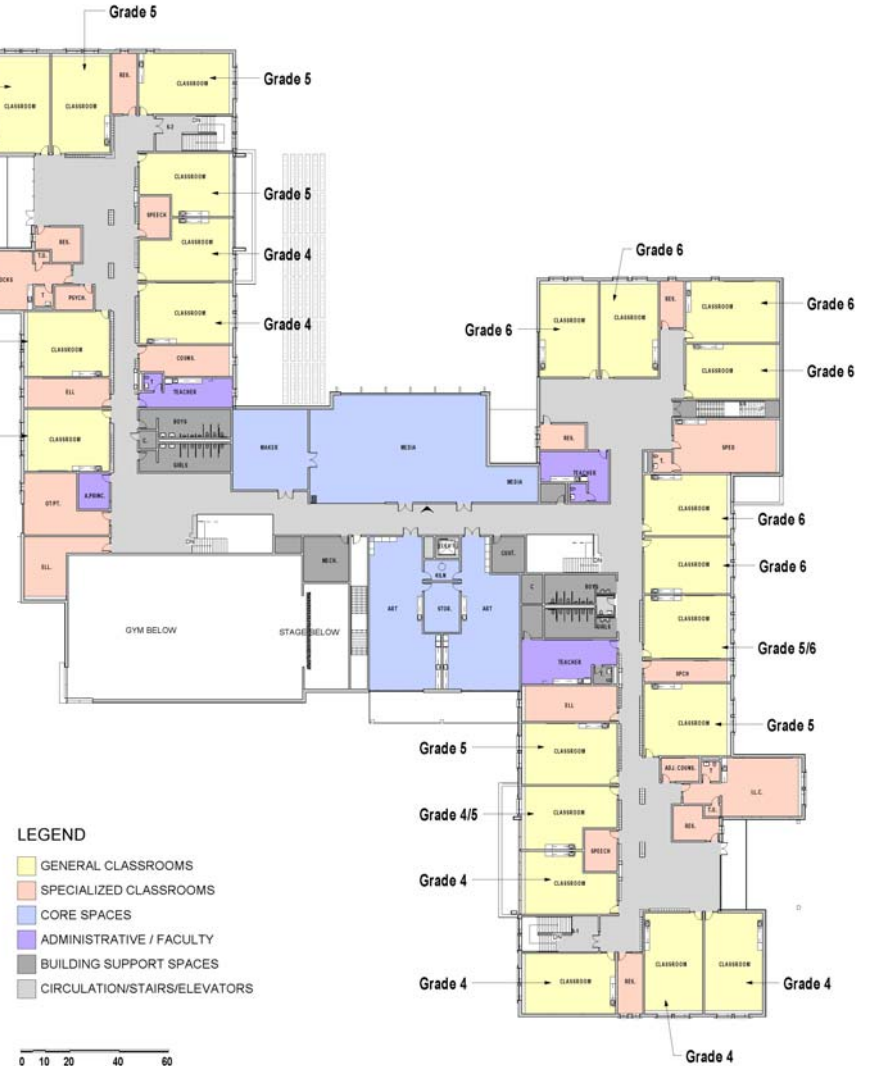


# SCHOOL BUILDING PROJECT

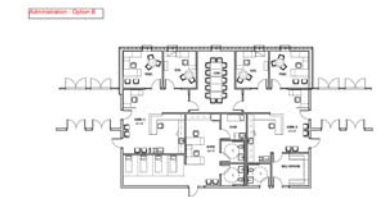
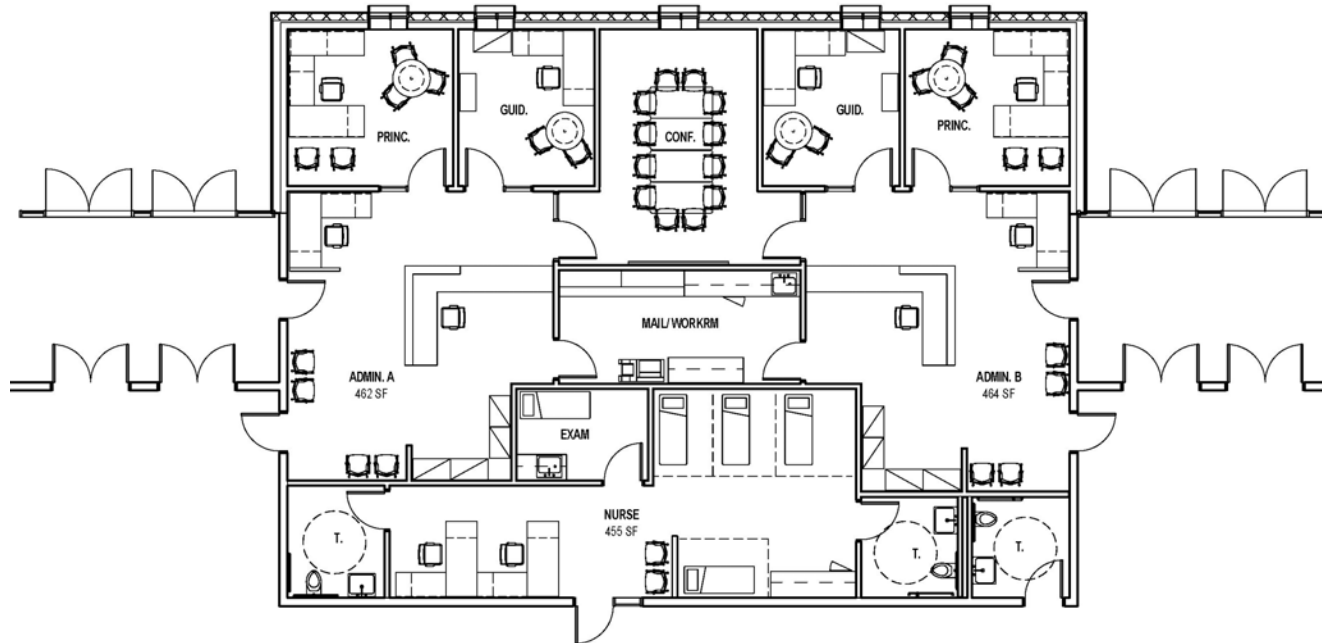




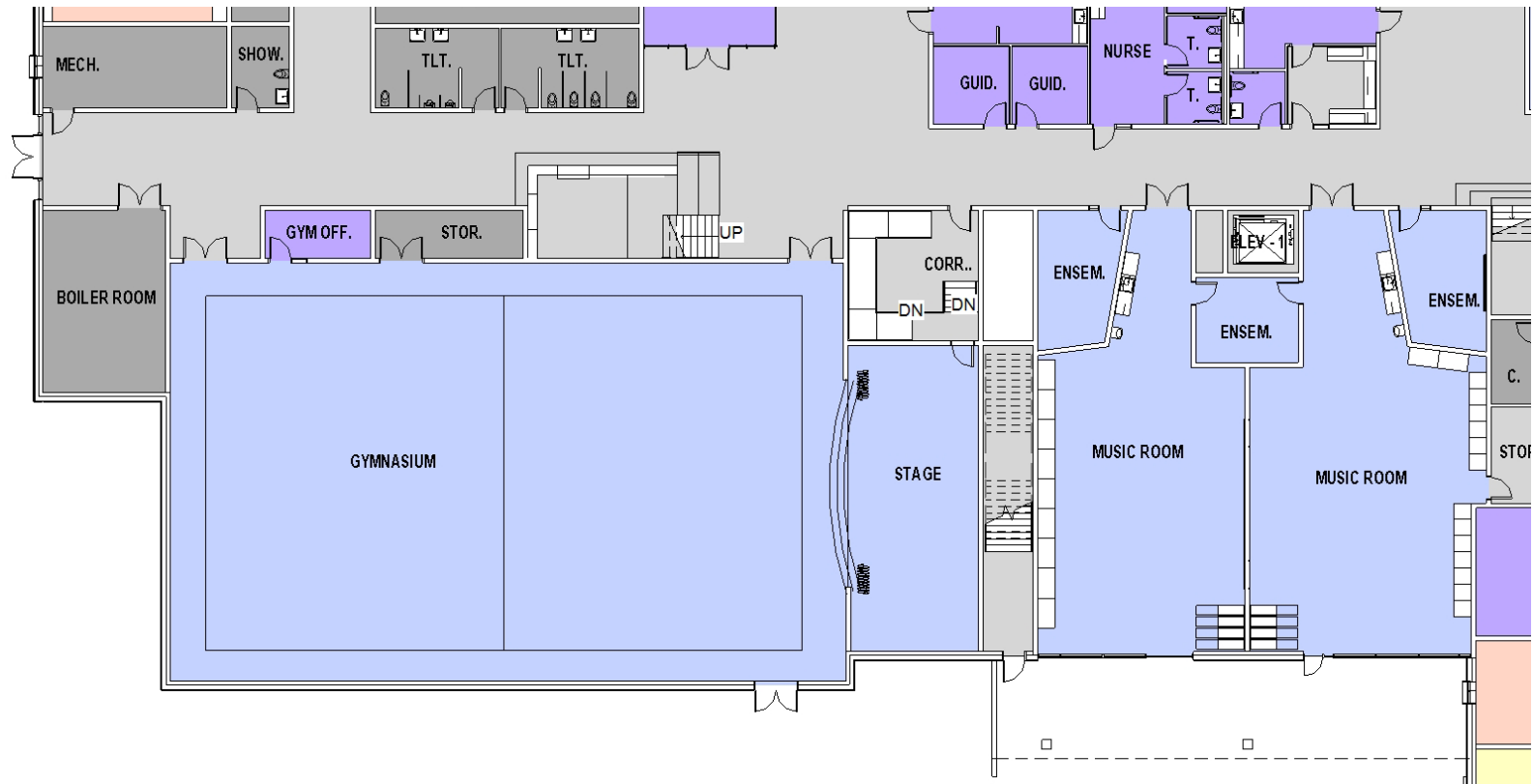
# SCHOOL BUILDING PROJECT



# FLOOR PLANS - ADMIN AREA

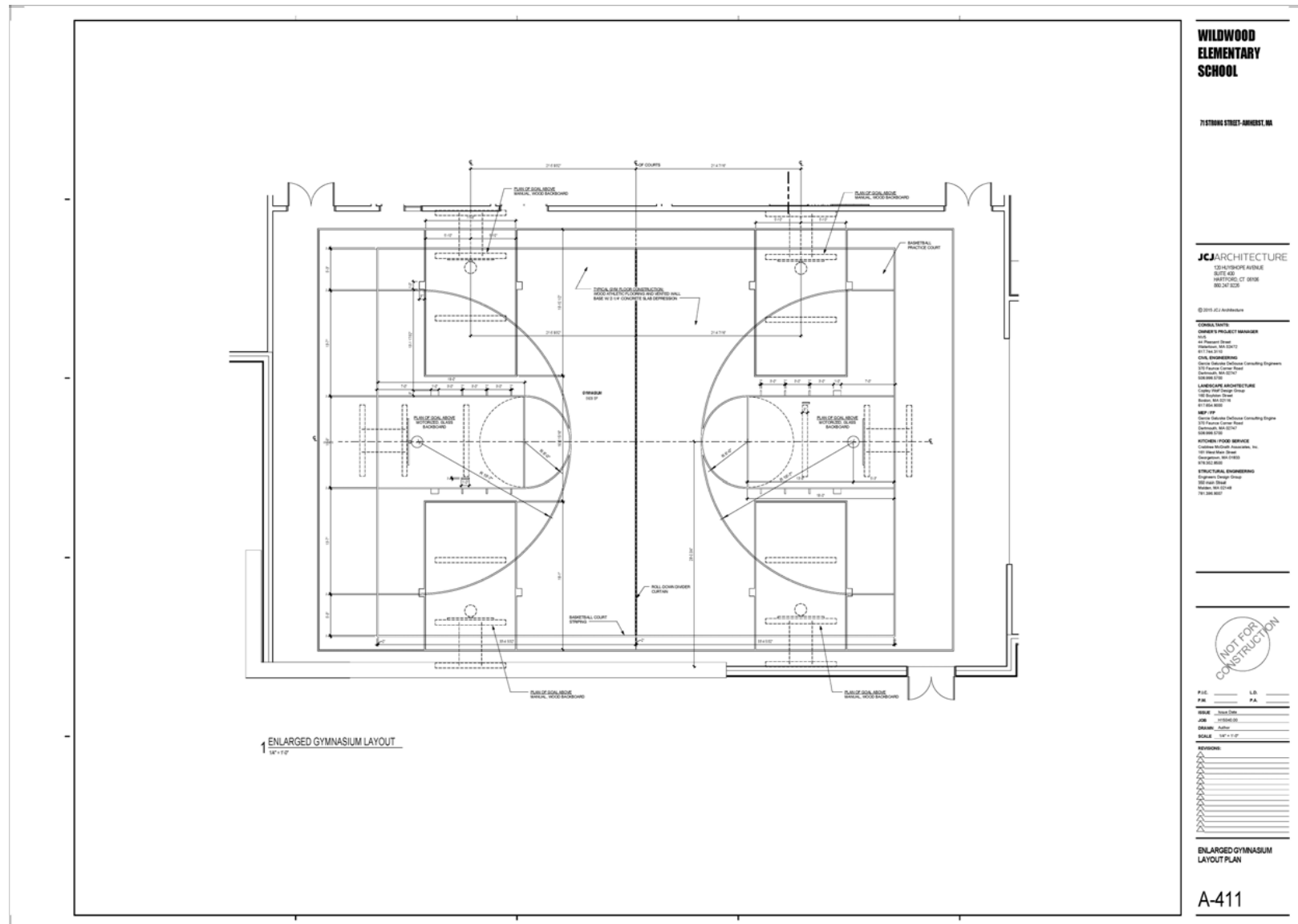


# FLOOR PLANS - GYMNASIUM

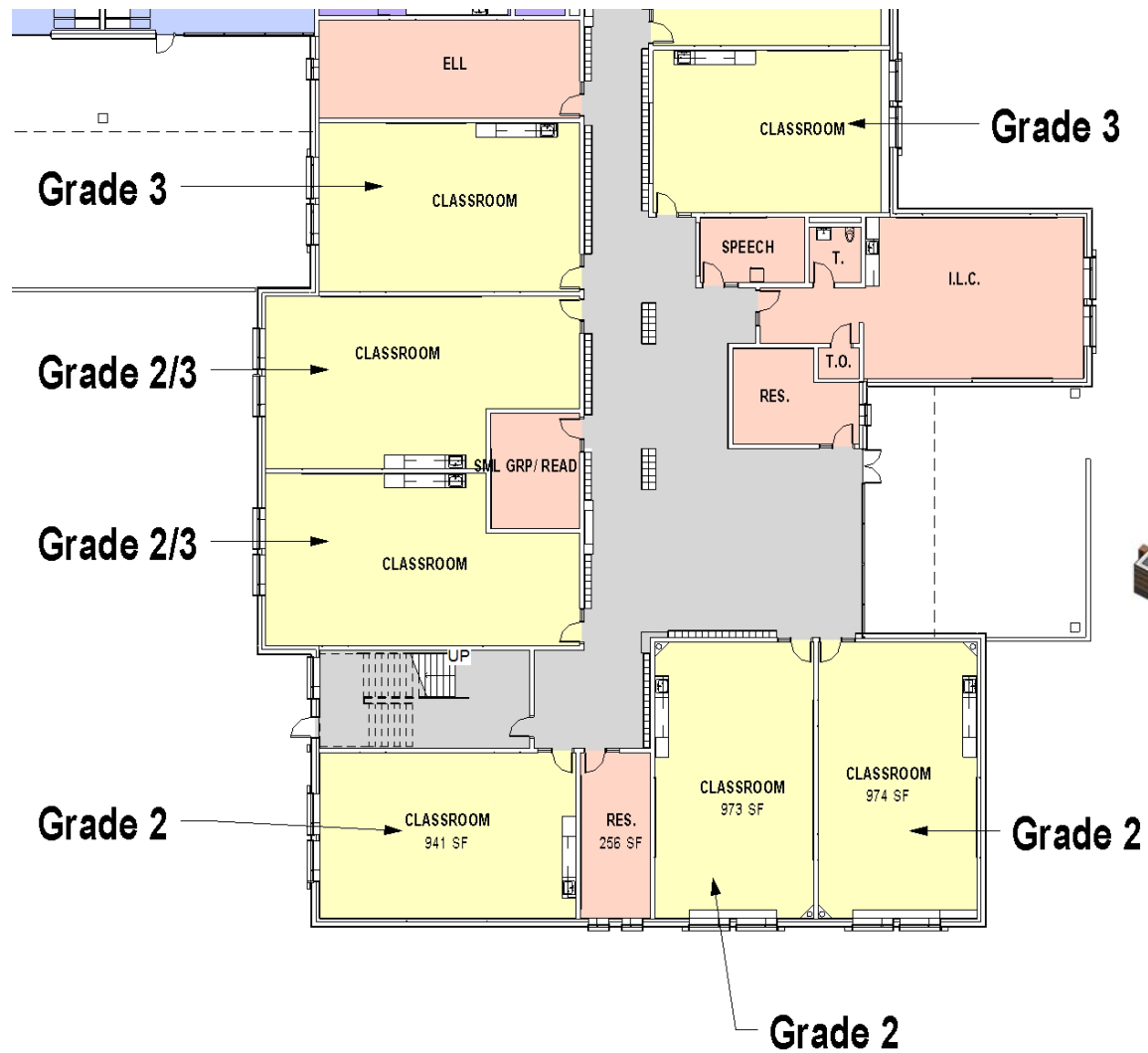




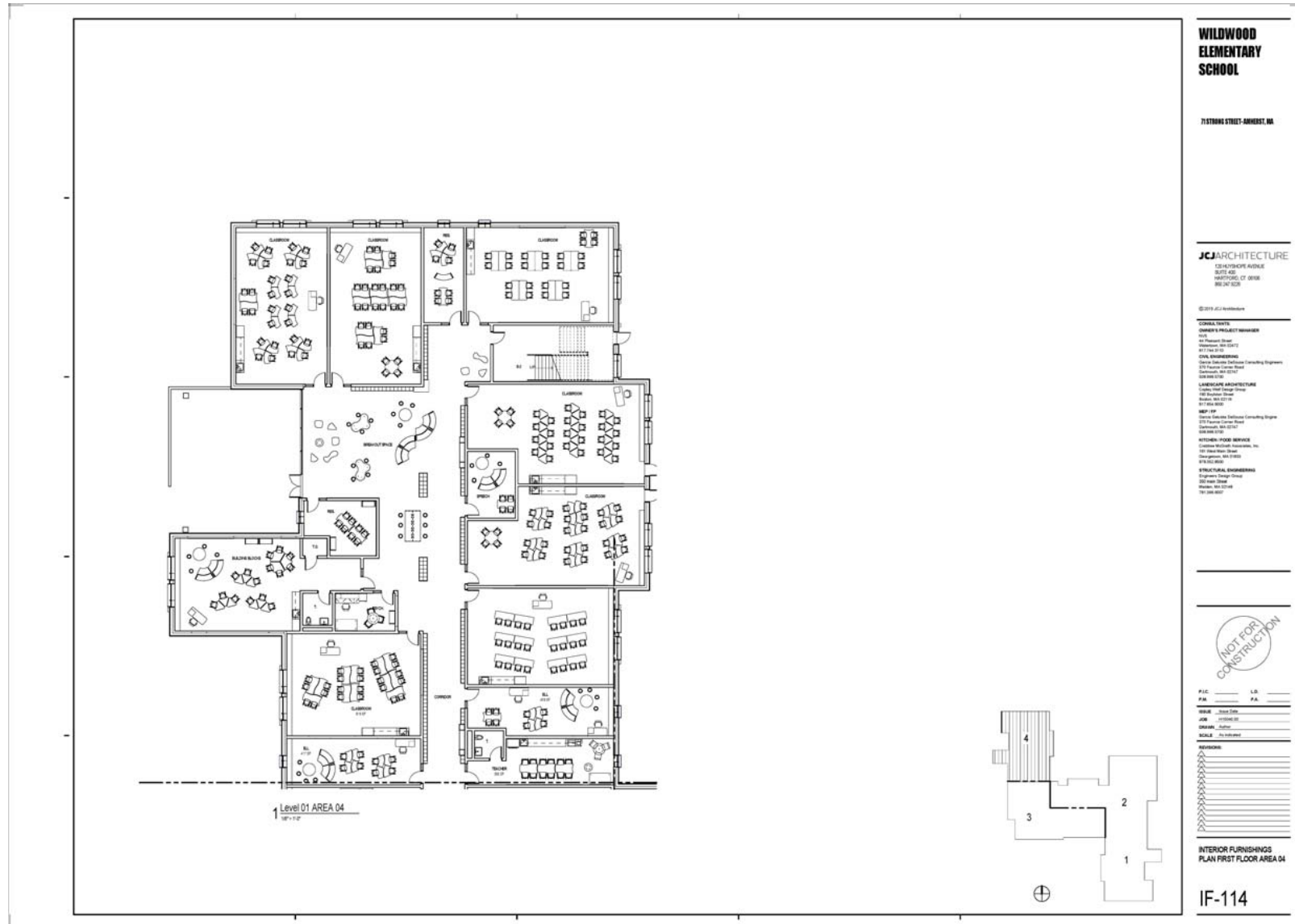
# FLOOR PLANS - GYMNASIUM



# FLOOR PLANS – BREAKOUT

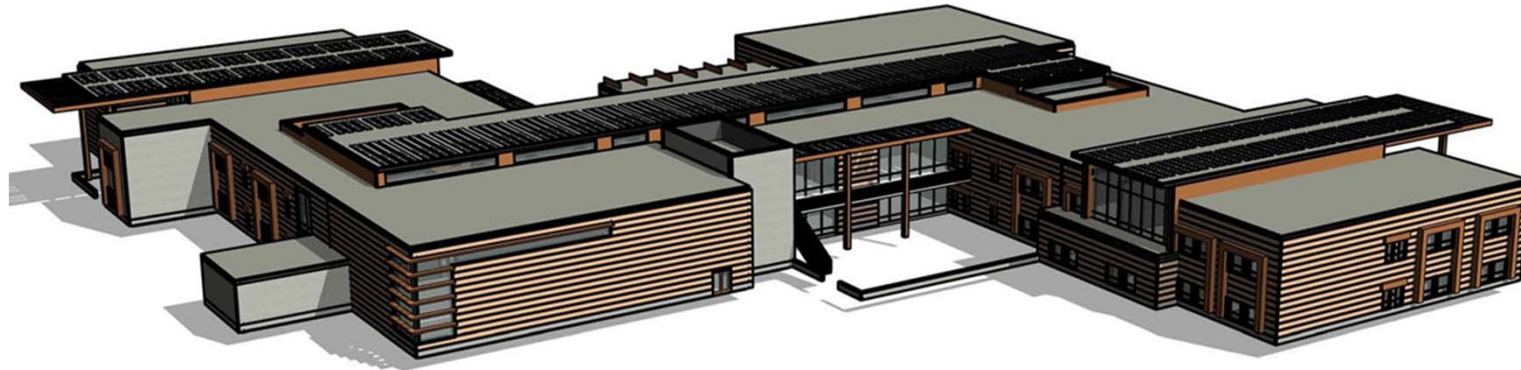


# FLOOR PLANS - BREAKOUT

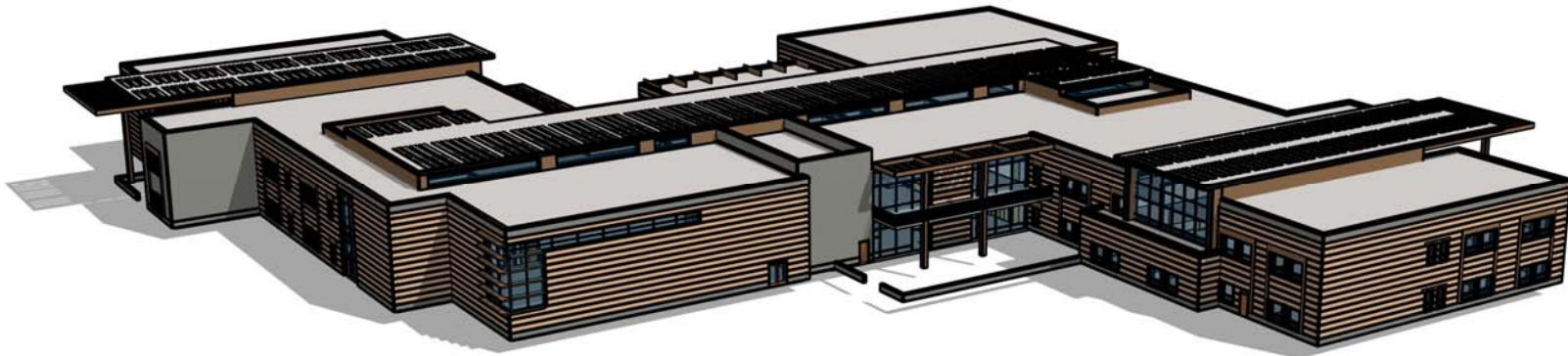




# MASSING STUDY



**SOUTH ELEVATION - OLD**



**SOUTH ELEVATION - REVISED**

# MASSING STUDY



**NORTH ELEVATION**



# MASSING STUDY – WEST ELEVATION



**WITHOUT STAIR**



**WITHOUT STAIR**



# EXTERIOR MATERIAL PRECEDENTS



SCHOOL BUILDING PROJECT  
AMHERST, MASSACHUSETTS

# SD ESTIMATING EFFORT

- SD level set of drawings
  - Architectural
  - Landscape
  - Civil
  - Structural
  - Mechanical
  - Electrical
  - Plumbing
  - Fire Protection
  - Technology
- Narrative Documents:
  - Mechanical loads
  - HVAC
  - Technology Systems
  - Plumbing Systems
  - Electrical Systems
  - Civil
  - Structural
  - Fire Protection Systems
- Outline Specifications
  - UniFormat (per MSBA requirements)
- Room Data Sheets