



JANUARY 21, 2016

# **SCHOOL BUILDING COMMITTEE**

**JCJ**ARCHITECTURE

# TODAY'S AGENDA

- Review Schedule
- Review Design Options & Budgets
- Review Design Evaluation Matrix
- Next Steps





CROCKER FARM



FORT RIVER



WILDWOOD

# SCHEDULE

SCHOOL BUILDING PROJECT

SCHOOL BUILDING COMMITTEE / SCHOOL COMMITTEE MEETING

SCHOOL BUILDING PROJECT  
AMHERST, MASSACHUSETTS

JCJ ARCHITECTURE  
JANUARY 21ST, 2016

# SCHEDULE

- ✓ Community Forum #1, Tuesday, September 29, 2015
- ✓ School Building Committee Meeting, Tuesday, October 15, 2015
- ✓ School Committee Meeting, Tuesday, October 20, 2015
- ✓ Community Forum #2, Monday, October 26, 2015
- ✓ School Committee Meeting, Tuesday, November 17, 2015
- ✓ School Building Committee Meeting, Thursday, December 3, 2015
  - Authorize PDP submission to MSBA
- ✓ PDP Submission to MSBA, Monday, December 7, 2015
- ✓ Community Forum #3, Tuesday, December 8, 2015
  - Space Template / Site Alternatives / Existing Conditions Update
- ✓ School Committee and School Building Committee Meeting  
Tuesday, December 22, 2015
  - Review Preliminary Design Alternatives
- ✓ Select Board Meeting, Monday, January 11, 2016
  - Project Update
- ✓ School Building Committee / School Committee Meeting, January 13, 2016
- ✓ Community Forum #4, January 13, 2016
- ✓ School Committee Meeting, Tuesday, January 19, 2016
  - Approve Grade Configuration
- **School Building Committee Meeting, Thursday, January 21, 2016**
- PSR Submission to MSBA, Thursday, February 11, 2016
- MSBA Board Approval, Wednesday, March 30, 2016



## AMHERST ELEMENTARY BUILDING PROJECT SCHEDULE

<b>January 4, 2016 – January 10, 2016</b>	<b>Family &amp; Staff Survey</b>  Survey will be open between these dates; results will be available on January 13, 2016	N/A
<b>January 11, 2016 [7:25-7:50 PM]</b>	<b>Amherst Select Board Meeting</b>  Project Update	Town Hall
<b>January 13, 2016 [4:00-5:30 PM]</b>	<b>Joint Amherst Building &amp; School Committee Meeting</b>  Preliminary Budgets - Design Options - Schedule Review - Survey Results	Amherst Regional High School Library
<b>January 13, 2016 [6:30-8:30 PM]</b>	<b>Community Forum #4</b>  Preliminary Budgets - Design Options - Schedule Review - Survey Results	Amherst Regional High School Library
<b>January 14, 2016 [3:30-5:00 PM]</b>	<b>Amherst School Committee Meeting</b>  Discuss information regarding Building Project prior to the January 19, 2016 vote	Amherst Regional High School Library
<b>January 19, 2016 [6:00-8:00 PM]</b>	<b>Amherst School Committee Meeting</b>  Vote on Grade Configuration	Amherst Regional High School Library
<b>January 21, 2016 [4:00-6:00 PM]</b>	<b>School Building Committee Meeting</b>  Discuss Preferred Schematic Report Design submission	Amherst Regional Middle School Library



## AMHERST ELEMENTARY BUILDING PROJECT SCHEDULE

February 2, 2016 [4:00-5:30 PM]	School Building Committee Meeting Vote on Preferred Schematic Report Design submission	TBD
February 11, 2016	Preferred Schematic Report Design Submission to MSBA	N/A
March 30, 2016	MSBA Board Approval of Preferred Schematic Report Design	TBD
September, 2016	MSBA Board Approval of Project Scope & Budget	TBD
October, 2016	Amherst Town Meeting Approval Vote	TBD
November 8, 2016	Anticipated Override Vote	TBD





CROCKER FARM



FORT RIVER



WILDWOOD

# DESIGN OPTIONS & BUDGETS

SCHOOL BUILDING PROJECT

SCHOOL BUILDING COMMITTEE / SCHOOL COMMITTEE MEETING

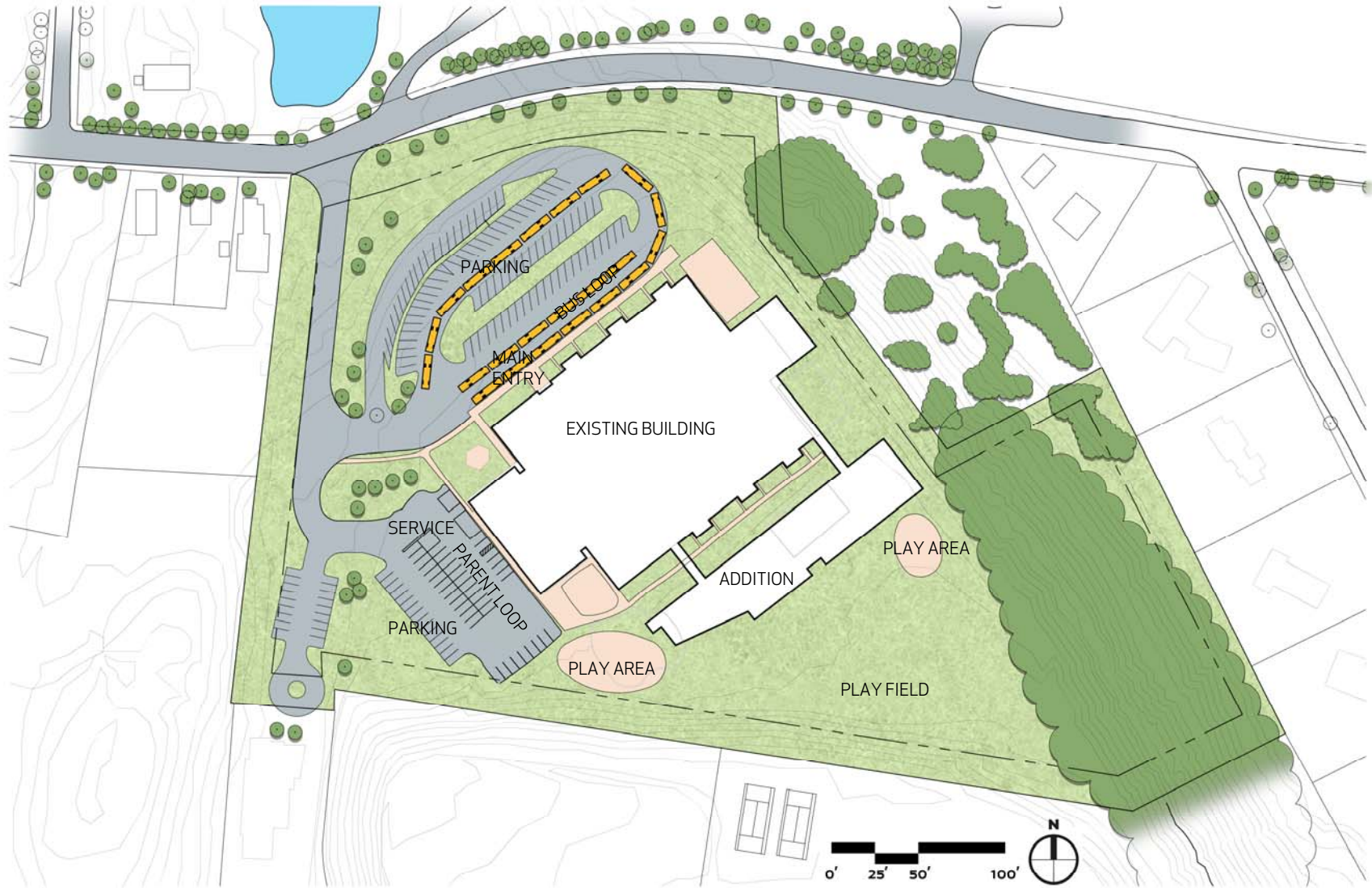
# DESIGN OPTIONS – 750 STUDENTS

## GRADE RECONFIGURATION 2-6

- Option W10 - Renovation + Additions at Wildwood Site
- Option W7 – New Construction at Wildwood Site
- Option W12 – New Construction at Wildwood Site
- Option FR5 – New Construction at Fort River Site



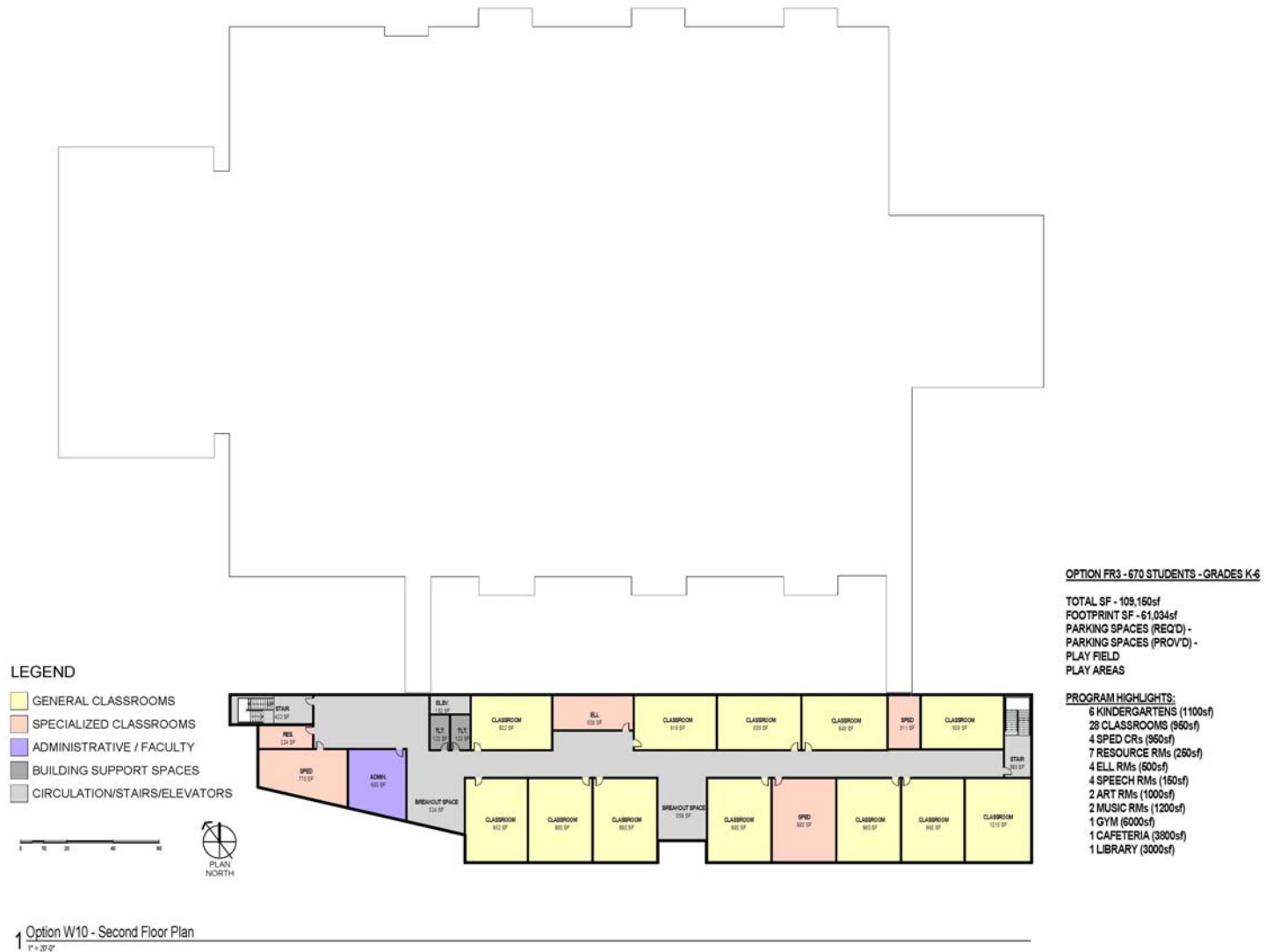
# OPTION W10 - ADD/RENO (750 2-6)



# OPTION W10 - FIRST FLOOR PLAN (750 2-6)



# OPTION W10 – SECOND FLOOR PLAN (750 2-6)





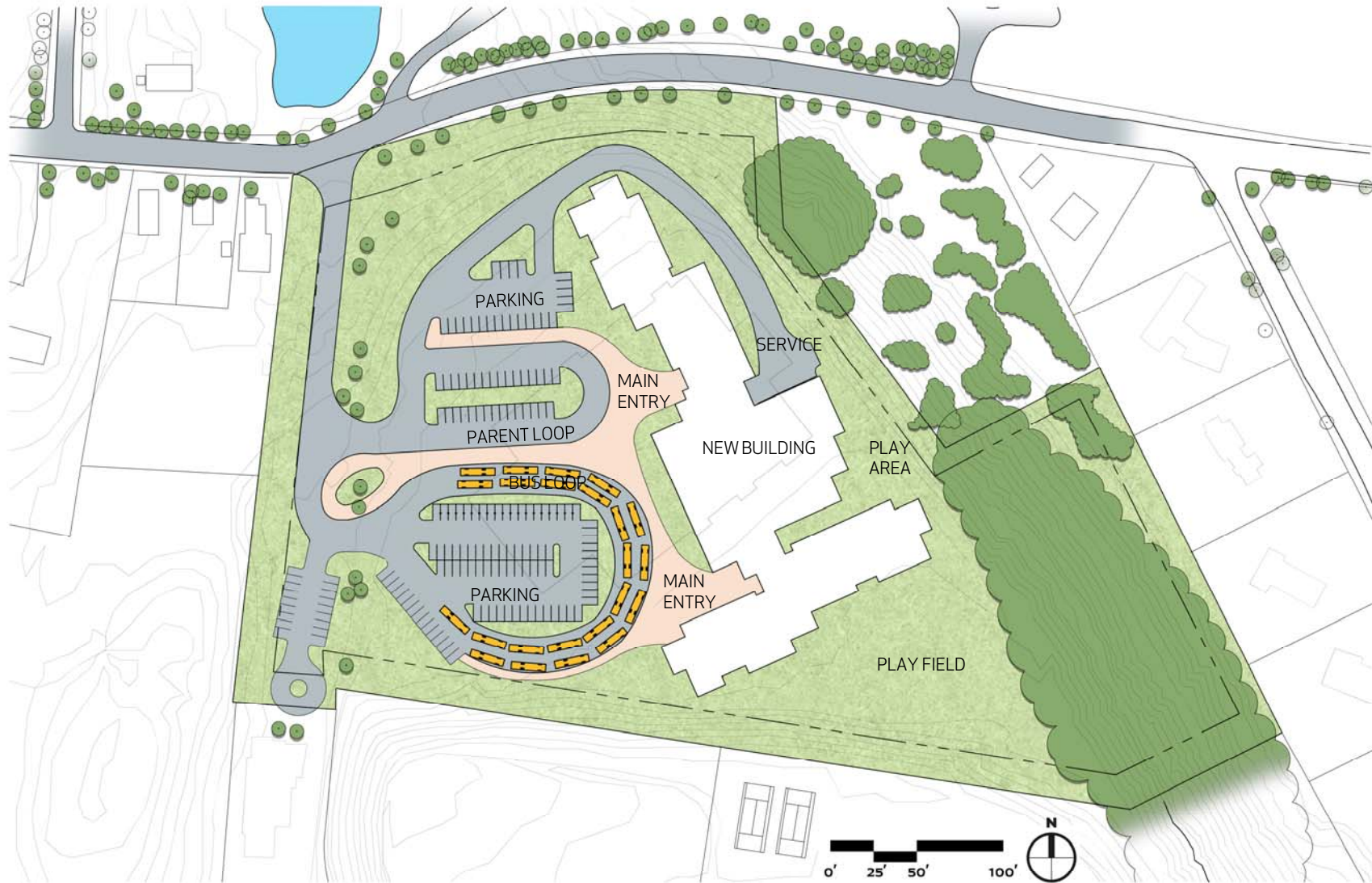
# OPTION W10 – RENO/ADD (750 2-6)

Enrollment:	750 students
Square Feet (SF)	126,000
Estimated Construction Cost:	\$49.0M (\$389/sf)
Estimated Total Project Cost:	\$61.2M (25.0% soft costs)
Estimated MSBA Reimbursement:	50% - 55%
Estimated Cost to Amherst:	\$30.6M

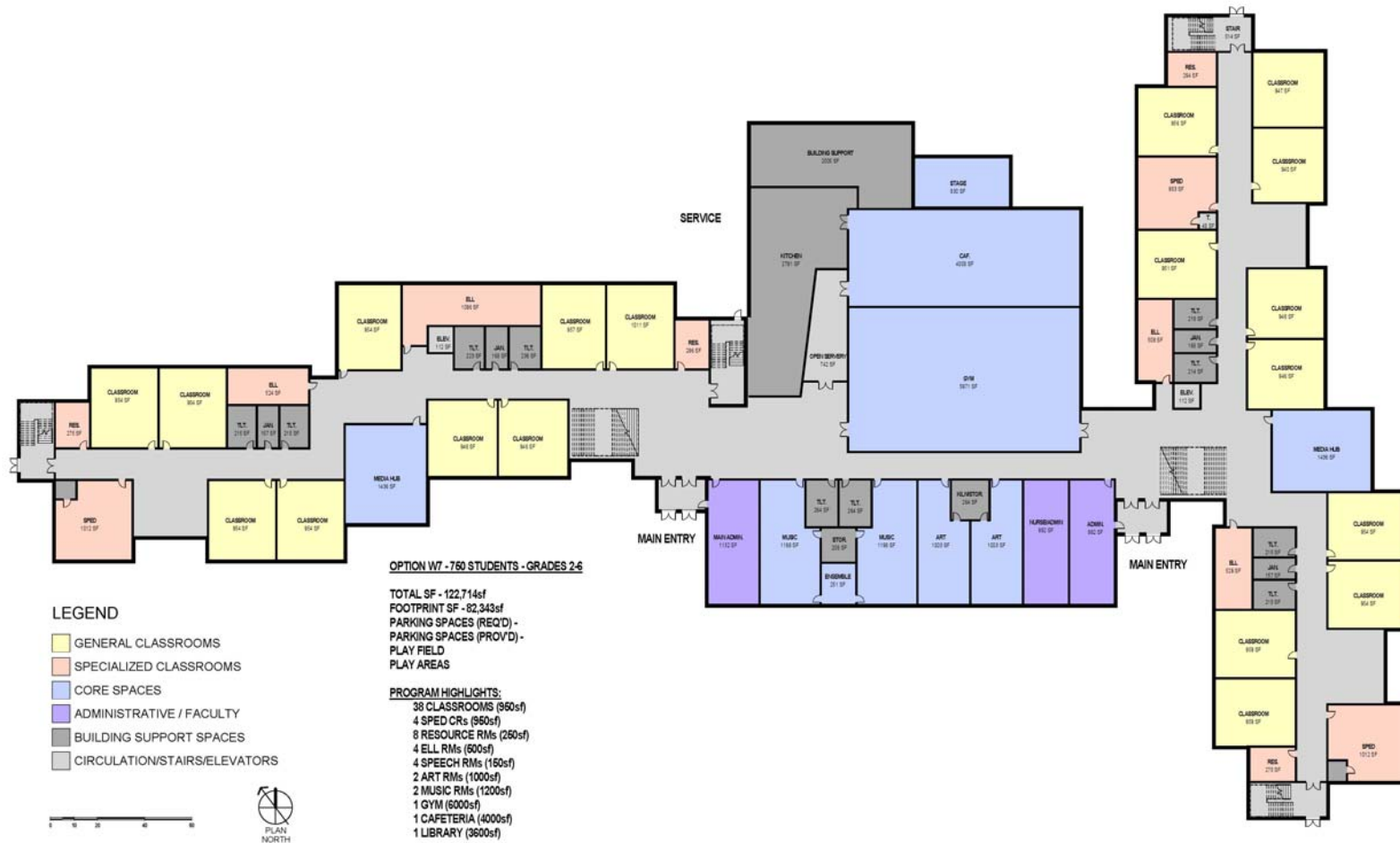
## Scope of Work:

- Phased construction including:
  - Site upgrades, accessibility upgrades, new exterior doors and windows, new roof, new interior layout, new mechanical, electrical, plumbing and fire alarm systems.
  - Classroom addition.
- Excludes cost of swing space.
- Schedule; Phase 1 complete Spring 2019, Phase 2 Spring 2020, Phase 3 End 2020

# OPTION W7 - NEW (750 2-6)



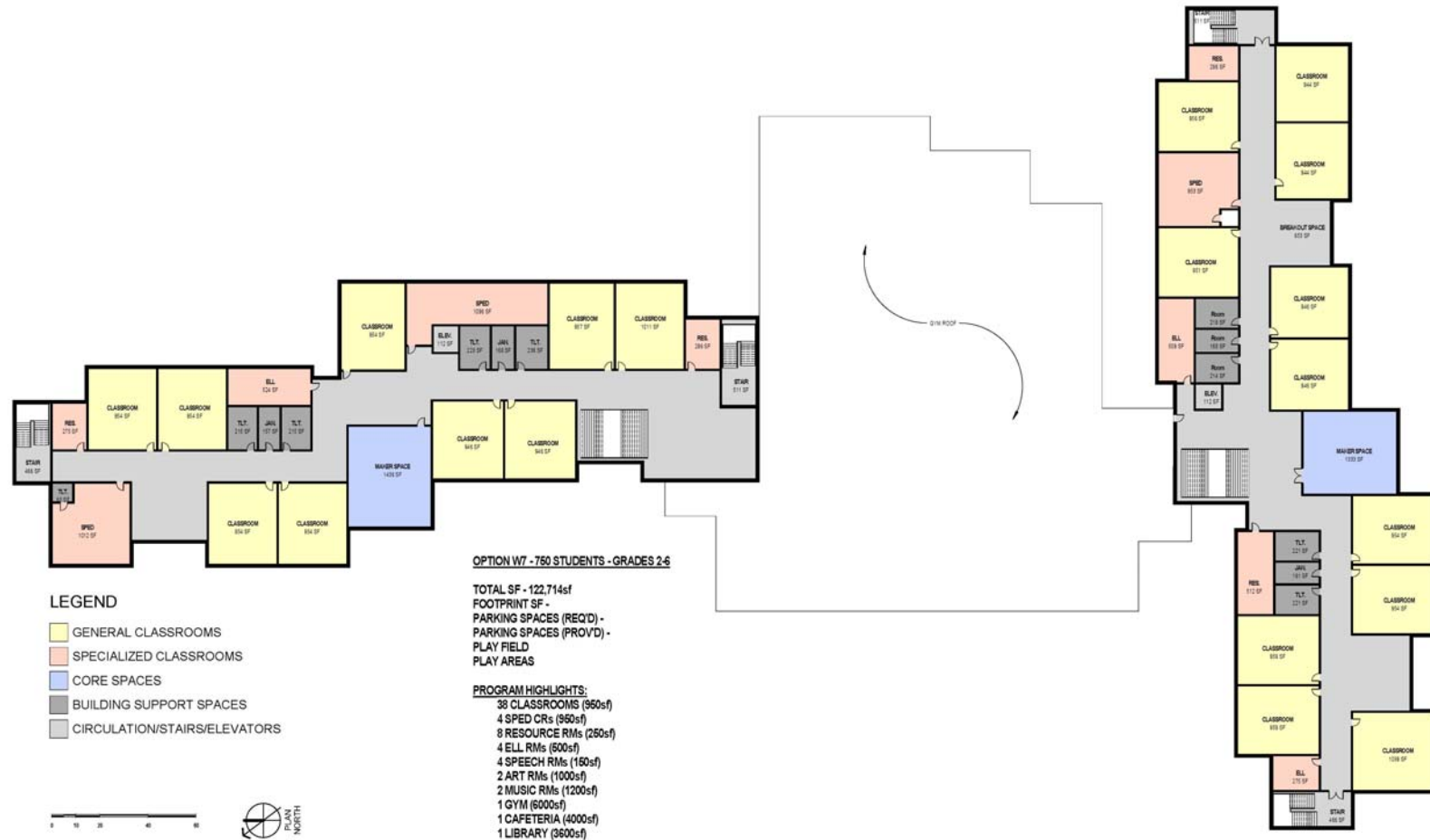
# OPTION W7 - FIRST FLOOR PLAN (750 2-6)



1 OPTION W7 - FIRST FLOOR PLAN  
 1" = 20'



# OPTION W7 - SECOND FLOOR PLAN (750 2-6)



1 OPTION W7 - SECOND FLOOR PLAN  
1" = 20'-0"

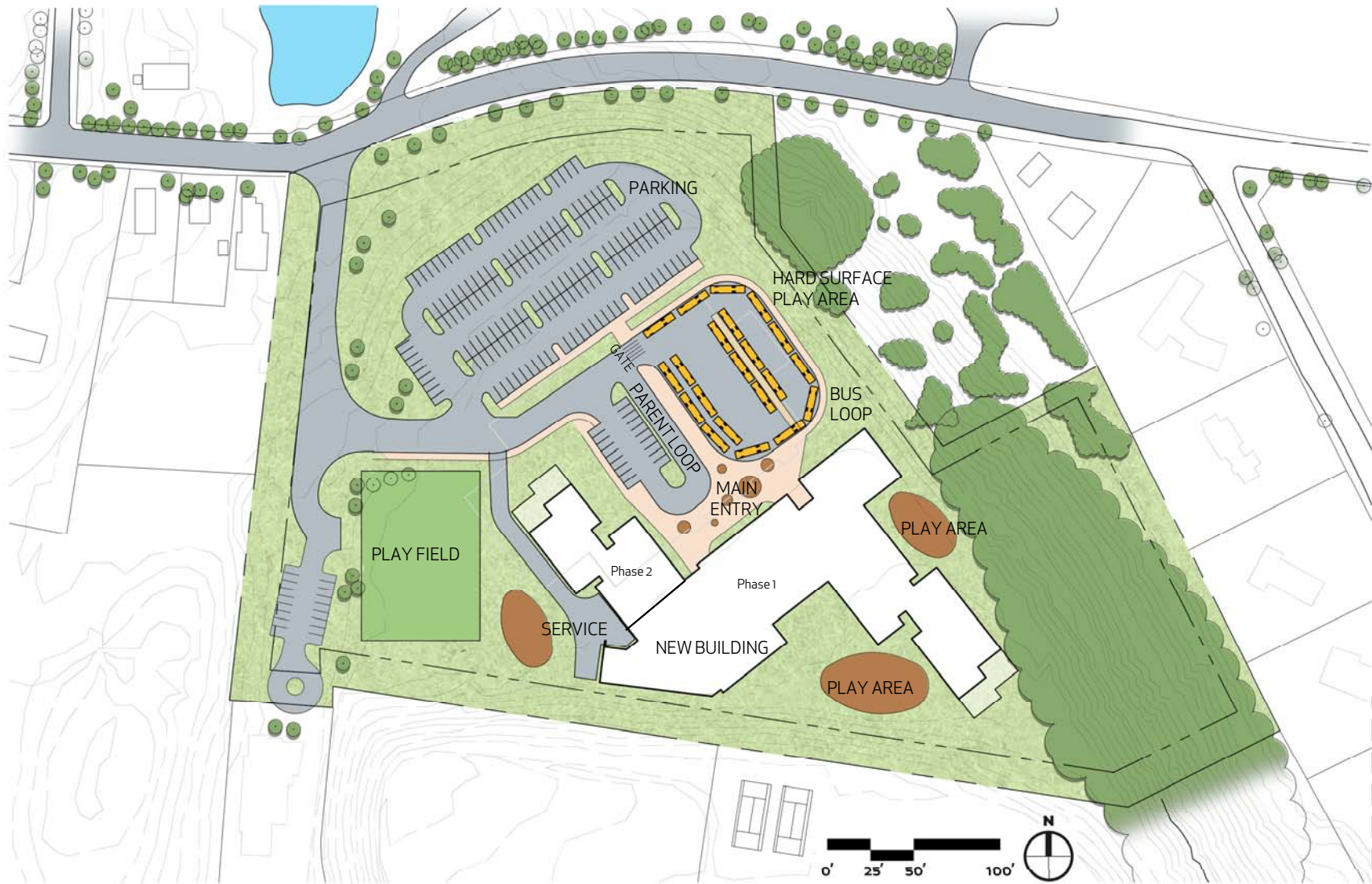
## OPTION W7 – NEW (750 2-6)

Enrollment:	750 students
Square Feet (SF)	122,714
Estimated Construction Cost:	\$53.0M (\$432/sf)
Estimated Total Project Cost:	\$66.3M (25.0% soft costs)
Estimated MSBA Reimbursement:	50% - 55%
Estimated Cost to Amherst:	\$33.2M

### Scope of Work:

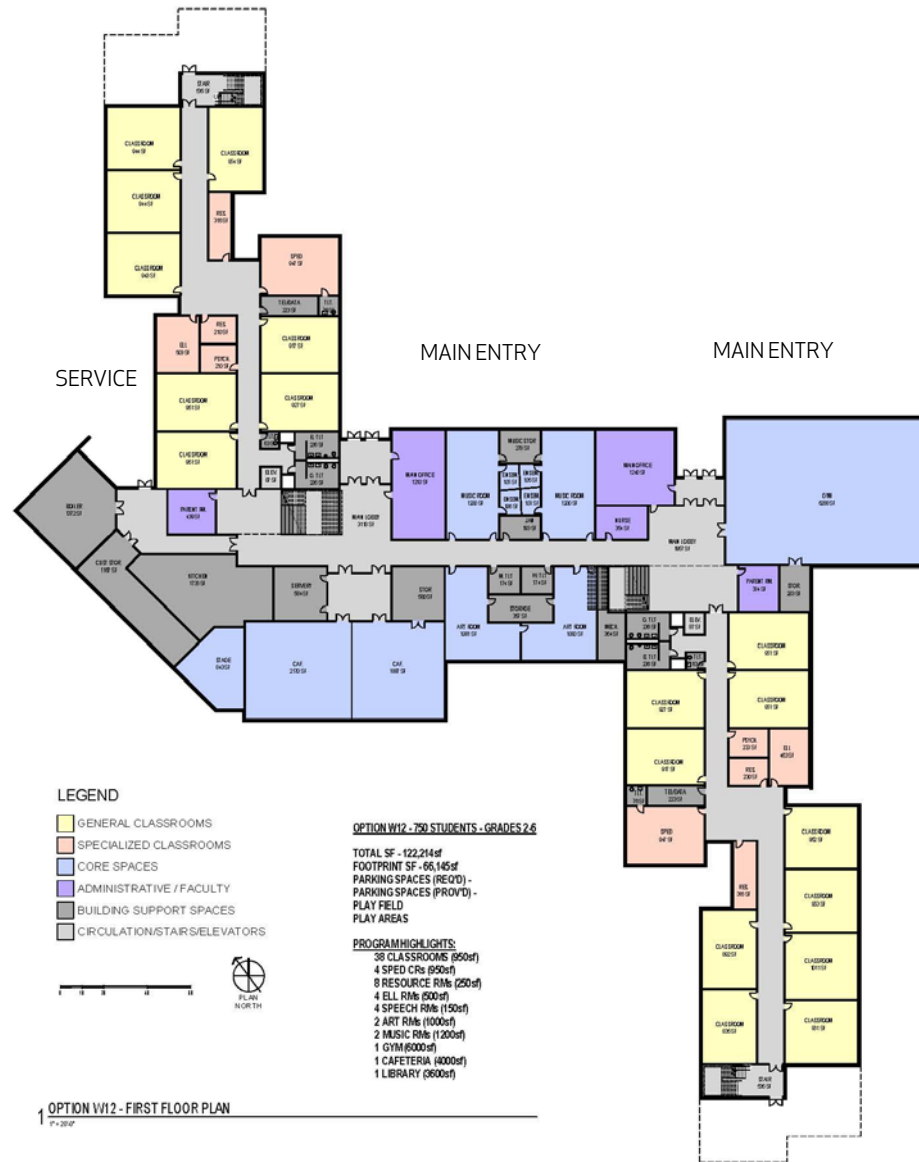
- Phased construction including:
  - Demolition of existing building
  - New site and building
- Excludes cost of swing space. (move out Jan 2018)
- Schedule; Complete end 2019

# OPTION W12 - NEW (750 2-6)

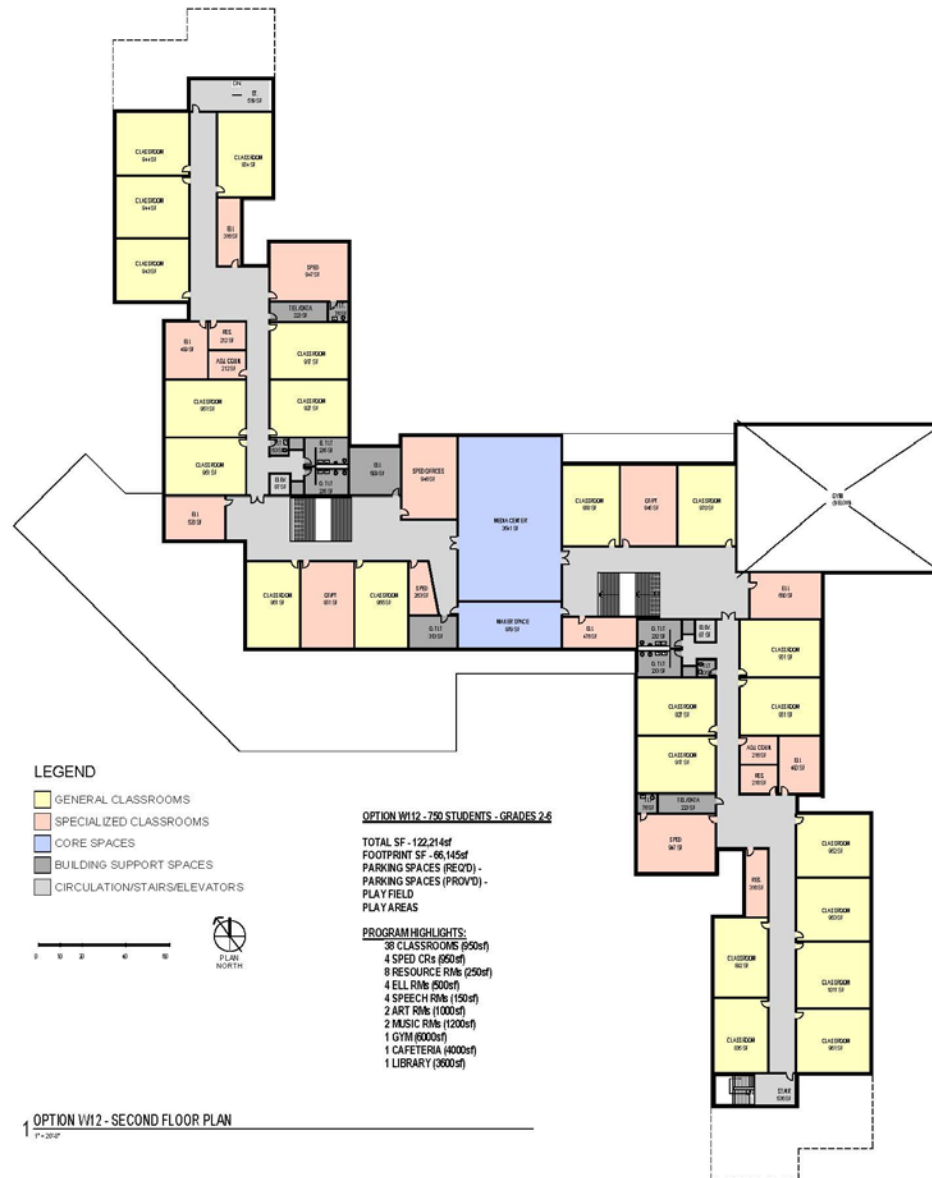




# OPTION W12 - FIRST FLOOR PLAN (750 2-6)



# OPTION W12 - SECOND FLOOR PLAN (750 2-6)



# OPTION W12 – NEW (750 2-6)

Enrollment:	750 students
Square Feet (SF)	122,714
Estimated Construction Cost:	\$53.7M (\$438/sf)
Estimated Total Project Cost:	\$67.2M (25.0% soft costs)
Estimated MSBA Reimbursement:	50% - 55%
Estimated Cost to Amherst:	\$33.6M

## Scope of Work:

- Phased construction including:
  - New building (Phase 1)
  - Demolition of existing building
  - New site and building (Phase 2)
  - Schedule; Phase 1 complete Fall 2019 / Phase 2 Fall 2020



# OPTION FR5 - NEW (750 2-6)



# OPTION FR5 - FIRST FLOOR PLAN (750 2-6)



## LEGEND

- GENERAL CLASSROOMS
- SPECIALIZED CLASSROOMS
- CORE SPACES
- ADMINISTRATIVE / FACULTY
- BUILDING SUPPORT SPACES
- CIRCULATION/STAIRS/ELEVATORS

1" = 20'



## OPTION FR5 - 760 STUDENTS - GRADES 2-6

TOTAL SF - 122,714sf  
FOOTPRINT SF - 82,343sf  
PARKING SPACES (REQ'D) -  
PARKING SPACES (PROVD) -  
PLAY FIELD  
PLAY AREAS

## PROGRAM HIGHLIGHTS:

38 CLASSROOMS (960sf)  
4 SPED CRTs (960sf)  
8 RESOURCE RMs (250sf)  
4 ELL RMs (600sf)  
4 SPEECH RMs (150sf)  
2 ART RMs (1000sf)  
2 MUSIC RMs (1200sf)  
1 GYM (6000sf)  
1 CAFETERIA (4000sf)  
1 LIBRARY (3600sf)

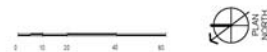
FR5 - FIRST FLOOR PLAN  
1" = 20'

# OPTION FR5 - SECOND FLOOR PLAN (750 2-6)



## LEGEND

- GENERAL CLASSROOMS
- SPECIALIZED CLASSROOMS
- CORE SPACES
- ADMINISTRATIVE / FACULTY
- BUILDING SUPPORT SPACES
- CIRCULATION/STAIRS/ELEVATORS



## OPTION FR5 - 750 STUDENTS - GRADES 2-6

TOTAL SF - 122,714sf  
 FOOTPRINT SF - 82,343sf  
 PARKING SPACES (REQ'D) -  
 PLAYFIELD SPACES (PROV'D) -  
 PLAY AREAS

## PROGRAM HIGHLIGHTS:

- 38 CLASSROOMS (800sf)
- 4 SPED CRs (800sf)
- 8 RESOURCE RMs (250sf)
- 4 ELL RMs (600sf)
- 4 SPEECH RMs (150sf)
- 2 ART RMs (1000sf)
- 2 MUSIC RMs (1200sf)
- 1 GYM (6000sf)
- 1 CAFETERIA (4000sf)
- 1 LIBRARY (3600sf)

1 OPTION W5 - SECOND FLOOR PLAN  
 1" = 20'-0"

# OPTION FR5 - NEW (750 2-6)

Enrollment:	750 students
Square Feet (SF)	122,714
Estimated Construction Cost:	\$52.6M (\$429/sf)
Estimated Total Project Cost:	\$65.7M (25.0% soft costs)
Estimated MSBA Reimbursement:	50% - 55%
Estimated Cost to Amherst:	\$32.9M

## Scope of Work:

- Phased construction including:
  - Demolition of existing building
  - New site and building
- Excludes cost of swing space. (move out Jan 2018)
- Schedule; Complete end 2019



# NEXT STEPS

## NEXT STEPS.....

- Preferred Schematic Report (PSR) – submit early-February