



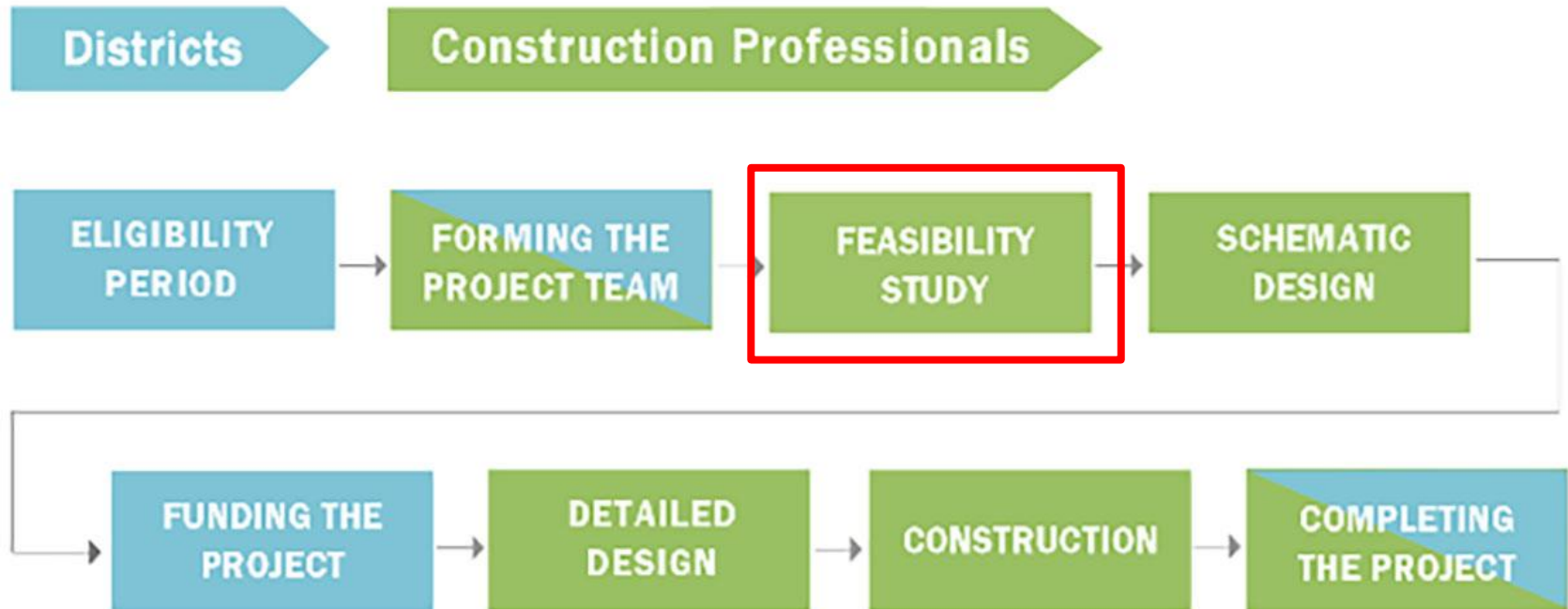
SELECT BOARD UPDATE

JANUARY 11, 2016

PROCESS OVERVIEW

MSBA Building Process

Steps primarily for:



PROCESS OVERVIEW

- ✓ MSBA Statement of Interest (SOI) submitted March 19, 2013
- ✓ MSBA invites SOI into Eligibility Period November 20, 2013
- ✓ Town Meeting approves Feasibility Study funding May 17, 2014
- ✓ MSBA approves Owner's Project Manager April 10, 2015
- ✓ Wildwood School Building Committee formed May 15, 2015
- ✓ MSBA Designer Selection Panel approves Designer July 7, 2015
- ✓ Wildwood School Building Committee hires Designer July 22, 2015
- ✓ MSBA Preliminary Design Program to be submitted December 7, 2015
- **MSBA Preferred Schematic Report to be submitted February 2016**
- MSBA Approves PSR in March 2016
- MSBA Authorizes Project Scope and Budget Agreement Sept 2016
- Town Meeting Votes on Project Scope and Budget Fall 2016
- Debt Exclusion Vote Fall 2016
- MSBA Authorizes Project Funding Agreement December 2016
- Complete Design and Construction on or about August 2019

SCHEDULE

- ✓ Community Forum #1, Tuesday, September 29, 2015
- ✓ School Building Committee Meeting, Tuesday, October 15, 2015
- ✓ School Committee Meeting, Tuesday, October 20, 2015
- ✓ Community Forum #2, Monday, October 26, 2015
- ✓ School Committee Meeting, Tuesday, November 17, 2015
- ✓ School Building Committee Meeting, Thursday, December 3, 2015
 - Authorize PDP submission to MSBA
- ✓ PDP Submission to MSBA, Monday, December 7, 2015
- ✓ Community Forum #3, Tuesday, December 8, 2015
 - Space Template / Site Options / Existing Conditions Update
- ✓ School Committee and School Building Committee Meeting
Tuesday, December 22, 2015
 - Review Preliminary Design Options
- ✓ **Select Board Meeting, Monday, January 11, 2016**
 - Project Update
- School Building Committee / School Committee Meeting / Community Forum #4,
Wednesday, January 13, 2016
 - Review Preliminary Design Options and Budgets
- School Committee Meeting, Tuesday, January 19, 2016
 - Approve Grade Configuration
- School Building Committee Meeting, Thursday, January 21, 2016
 - Approve Preferred Schematic Design Option
- PSR Submission to MSBA, Thursday, February 11, 2016
- MSBA Board Approval, Wednesday, March 30, 2016



AMHERST ELEMENTARY BUILDING PROJECT SCHEDULE

January 4, 2016 – January 10, 2016	Family & Staff Survey	N/A
	Survey will be open between these dates; results will be available on January 13, 2016	
January 11, 2016 [7:25-7:50 PM]	Amherst Select Board Meeting	Town Hall
	Project Update	
January 13, 2016 [4:00-5:30 PM]	Joint Amherst Building & School Committee Meeting	Amherst Regional High School Library
	Preliminary Budgets - Design Options - Schedule Review - Survey Results	
January 13, 2016 [6:30-8:30 PM]	Community Forum #4	Amherst Regional High School Library
	Preliminary Budgets - Design Options - Schedule Review - Survey Results	
January 14, 2016 [3:30-5:00 PM]	Amherst School Committee Meeting	Amherst Regional High School Library
	Discuss information regarding Building Project prior to the January 19, 2016 vote	
January 19, 2016 [6:00-8:00 PM]	Amherst School Committee Meeting	Amherst Regional High School Library
	Vote on Grade Configuration	
January 21, 2016 [4:00-6:00 PM]	School Building Committee Meeting	Amherst Regional Middle School Library
	Discuss Preferred Schematic Report Design submission	



AMHERST ELEMENTARY BUILDING PROJECT SCHEDULE

February 2, 2016 [4:00-5:30 PM]	School Building Committee Meeting	TBD
	Vote on Preferred Schematic Report Design submission	
February 11, 2016	Preferred Schematic Report Design Submission to MSBA	N/A
March 30, 2016	MSBA Board Approval of Preferred Schematic Report Design	TBD
September, 2016	MSBA Board Approval of Project Scope & Budget	TBD
October, 2016	Amherst Town Meeting Approval Vote	TBD
November 8, 2016	Anticipated Override Vote	TBD

WILDWOOD SITE - AERIAL



WILDWOOD SITE - EXISTING CONDITIONS



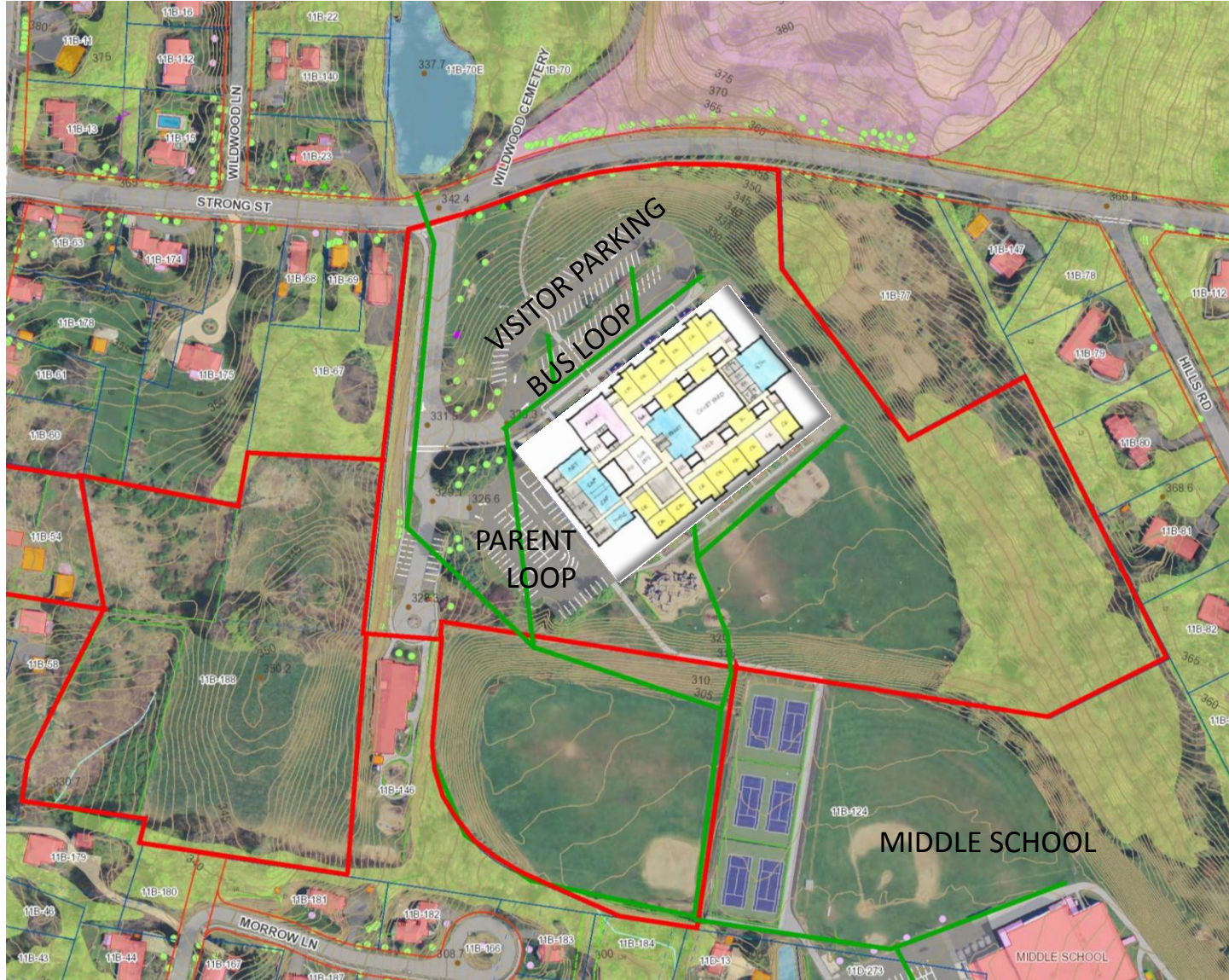
WILDWOOD - EXISTING BUILDING

LEGEND

- GENERAL CLASSROOMS
- SPECIALIZED CLASSROOMS
- CORE SPACES
- ADMINISTRATIVE / FACULTY
- BUILDING SUPPORT SPACES
- CIRCULATION/STAIRS/ELEVATORS



OPTION W1 - WILDWOOD (360 K-6)



OPTION W1 – WILDWOOD RENO (360 K-6)



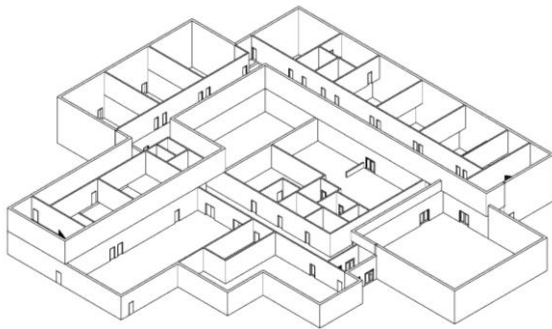
OPTION W2 - WILDWOOD (360 K-6)



OPTION W2 - WILDWOOD (360 K-6)



OPTION W2 - FIRST FLOOR PLAN (360 K-6)

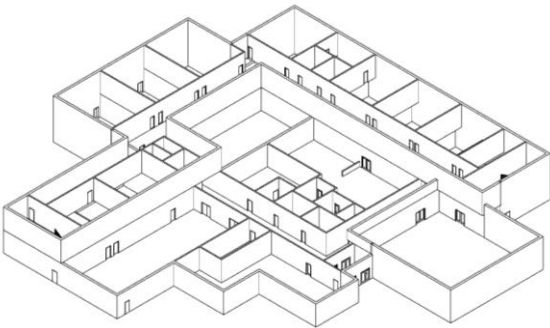


LEGEND

- GENERAL CLASSROOMS
- SPECIALIZED CLASSROOMS
- CORE SPACES
- ADMINISTRATIVE / FACULTY
- BUILDING SUPPORT SPACES
- CIRCULATION/STAIRS/ELEVATORS



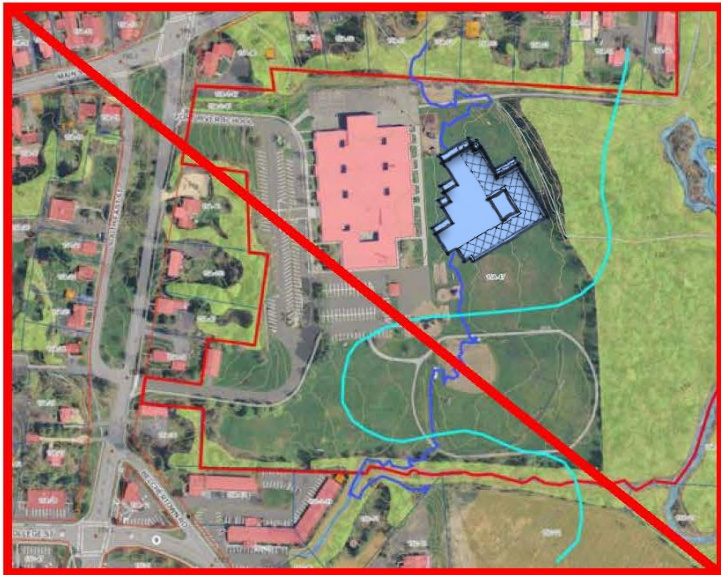
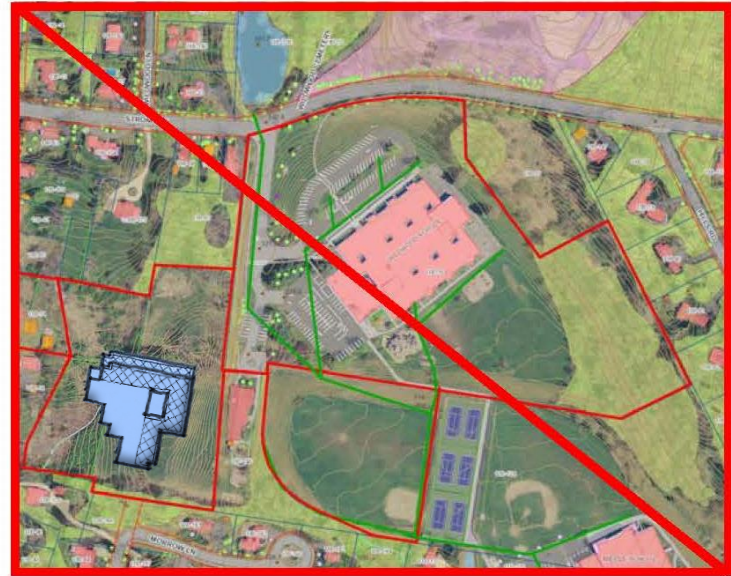
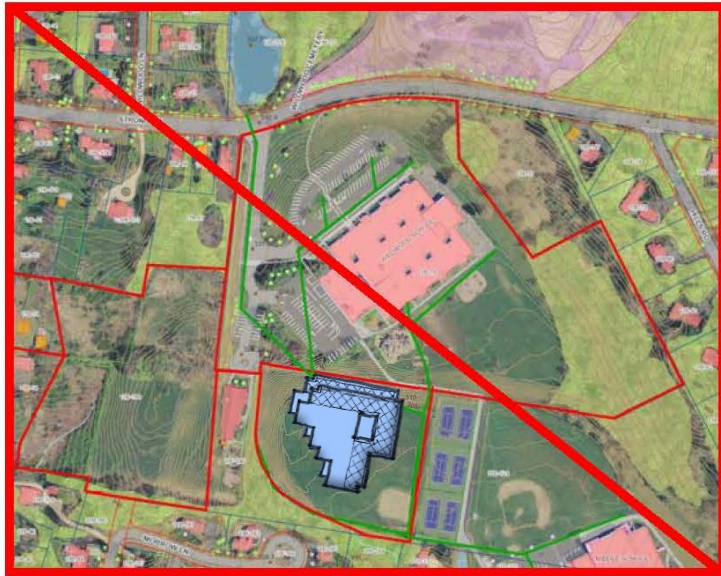
OPTION W2 – SECOND FLOOR PLAN (360 K-6)



- LEGEND
- GENERAL CLASSROOMS
 - SPECIALIZED CLASSROOMS
 - CORE SPACES
 - ADMINISTRATIVE / FACULTY
 - BUILDING SUPPORT SPACES
 - CIRCULATION/STAIRS/ELEVATORS

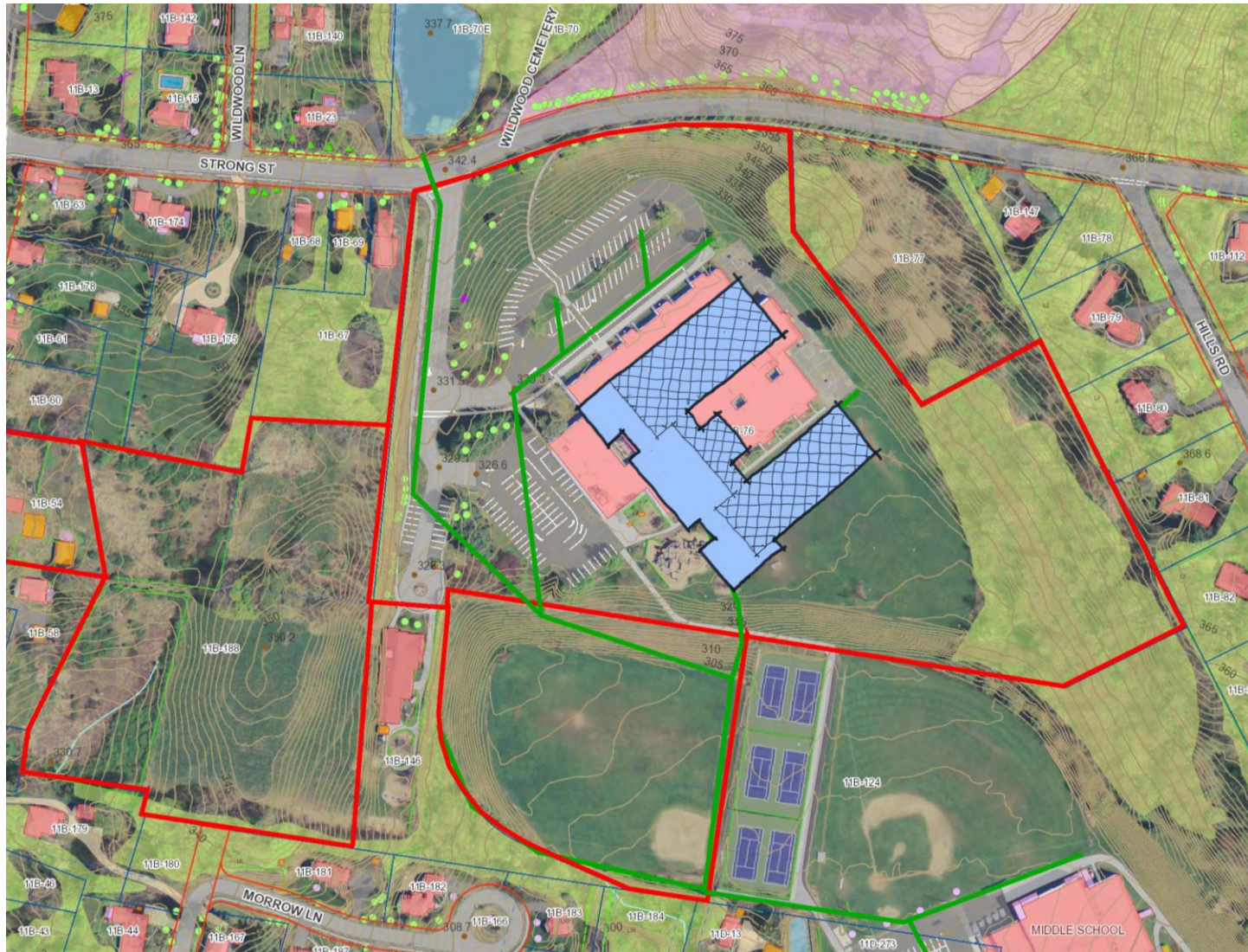


360 K-6 – NON VIABLE OPTIONS



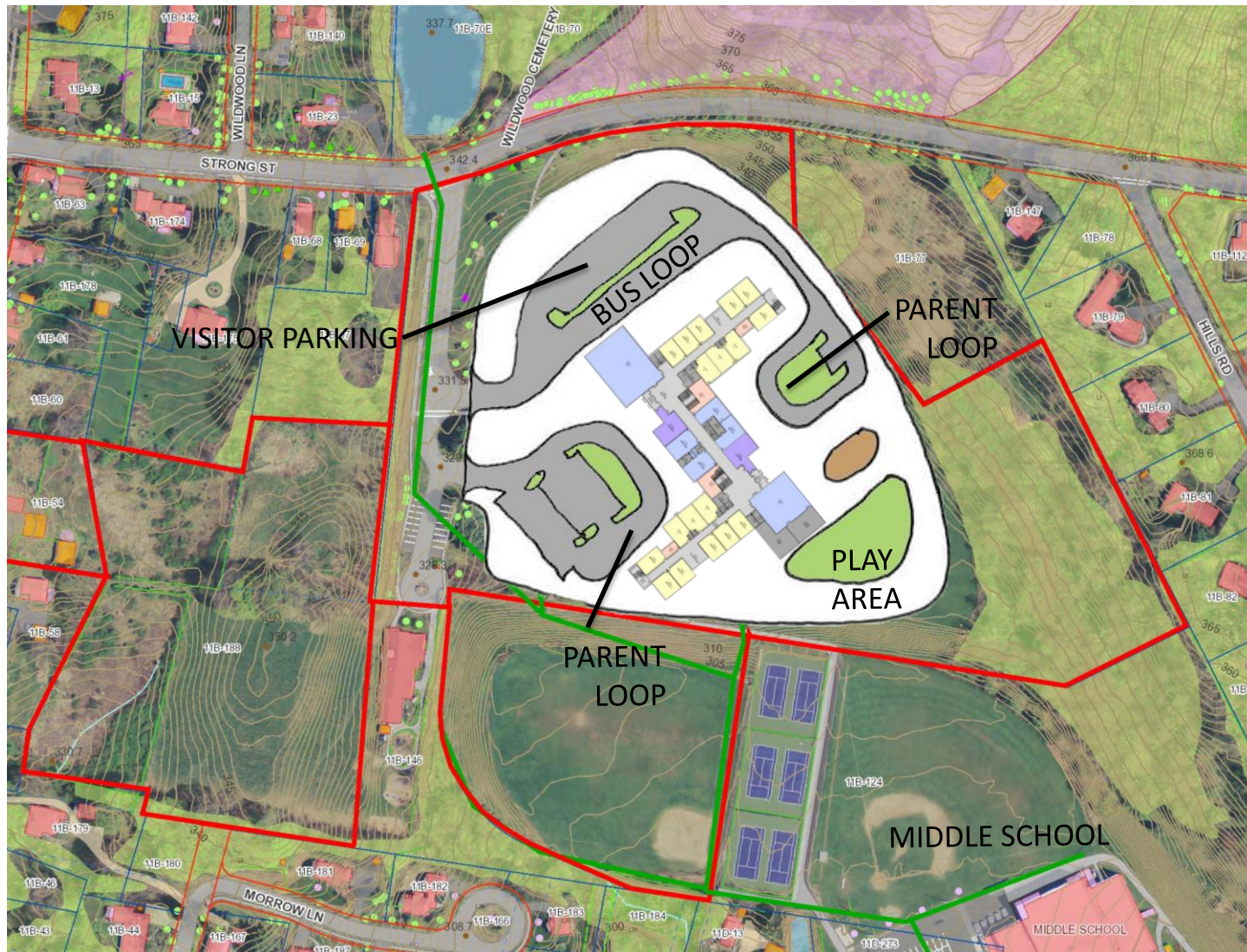
OPTION W5 - WILDWOOD (670 K-6)

OPTION W3 - WILDWOOD (750 2-6) IS SIMILAR



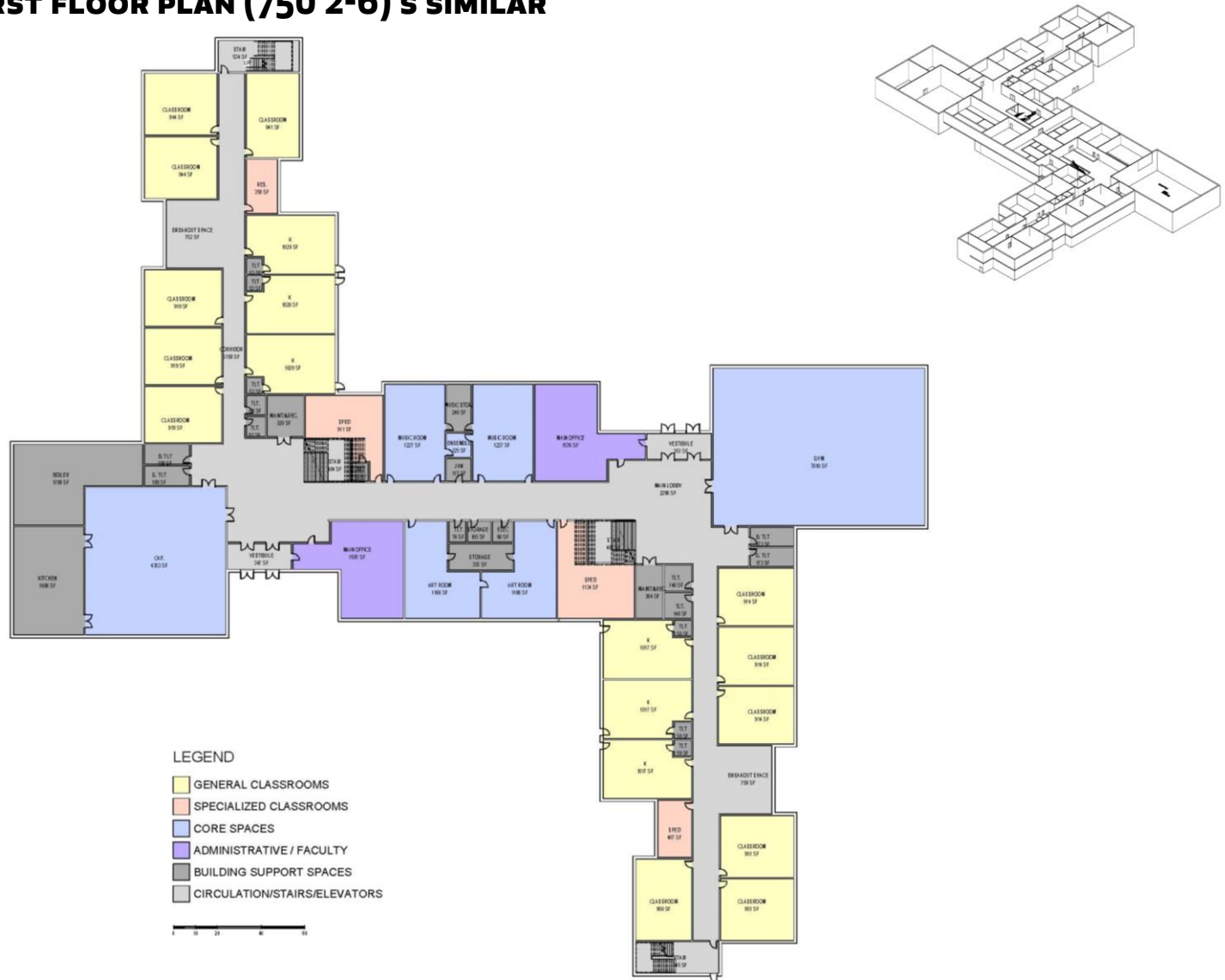
OPTION W5 - WILDWOOD (670 K-6)

OPTION W3 - WILDWOOD (750 2-6) IS SIMILAR

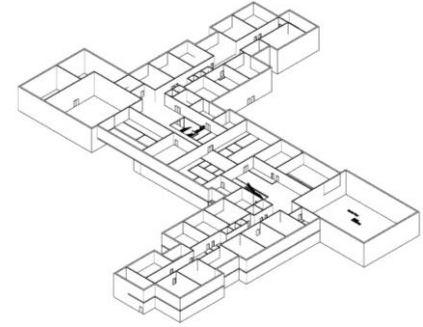


OPTION W5 - FIRST FLOOR PLAN (670 K-6)

OPTION W3 - FIRST FLOOR PLAN (750 2-6) S SIMILAR

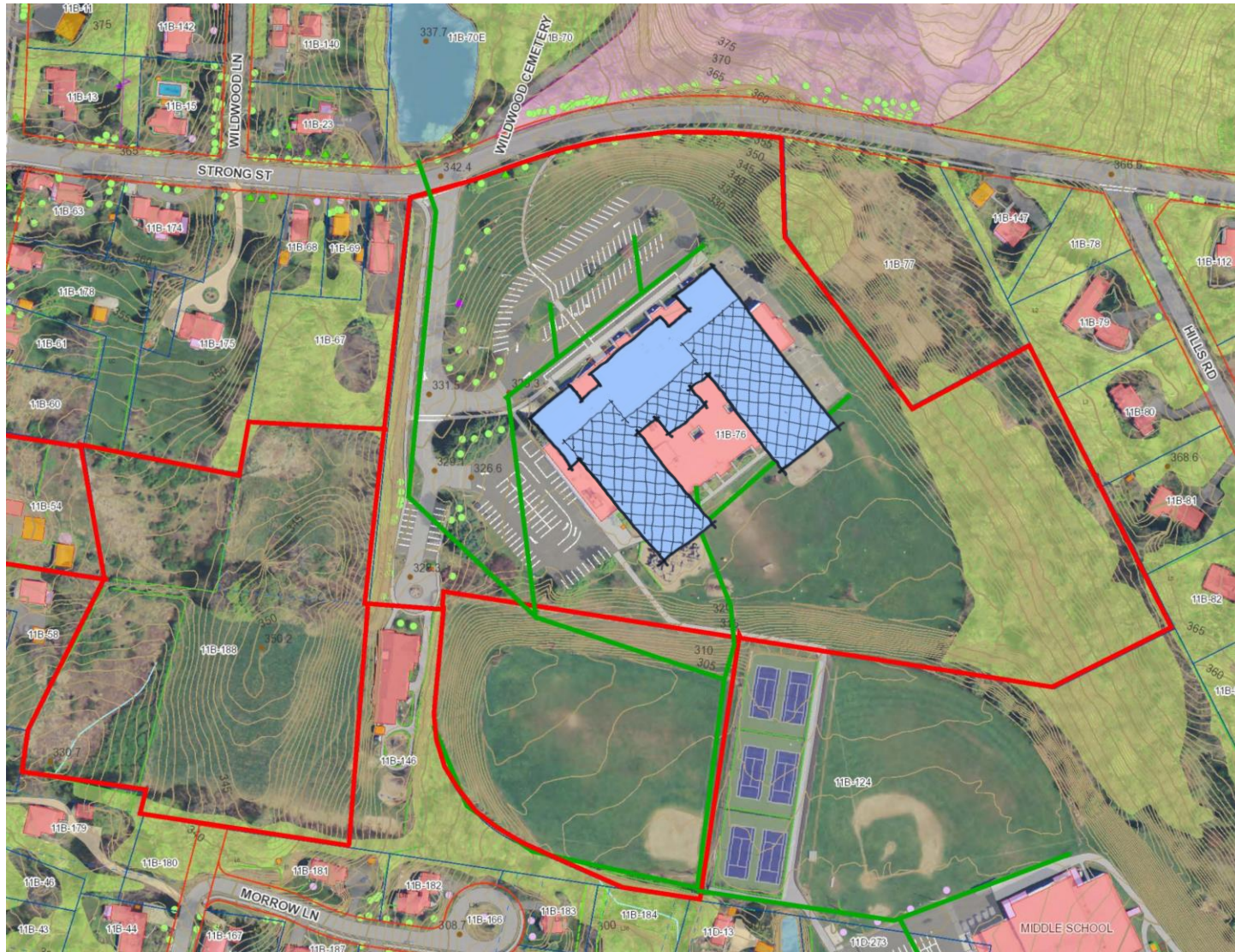


OPTION W3 - SECOND FLOOR PLAN (750 2-6) IS SIMILAR



OPTION W7 - WILDWOOD (670 K-6)

OPTION W8 - WILDWOOD (750 2-6) IS SIMILAR



OPTION W7 - WILDWOOD (670 K-6)

OPTION W8 - WILDWOOD (750 2-6) IS SIMILAR



OPTION W7 – WILDWOOD (670 K-6)

OPTION W8 – WILDWOOD (750 2-6) IS SIMILAR



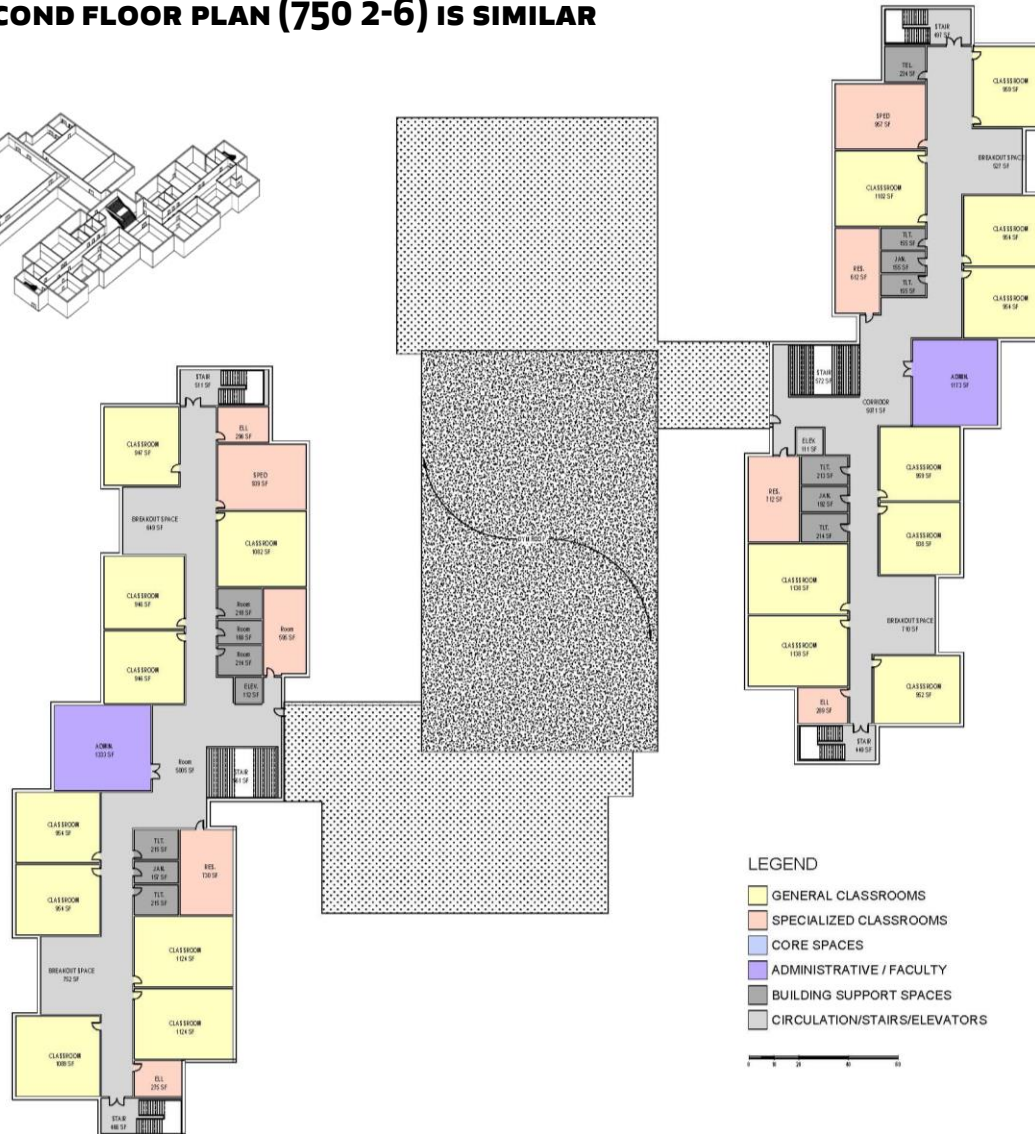
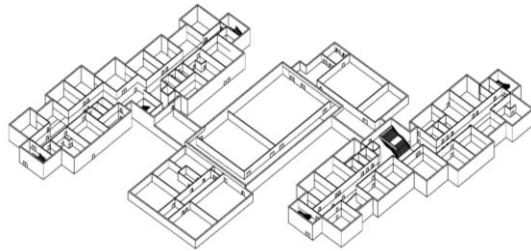
OPTION W7 - FIRST FLOOR PLAN (670 K-6)

OPTION W8 - FIRST FLOOR PLAN (750 2-6) IS SIMILAR



OPTION W7 - SECOND FLOOR PLAN (670 K-6)

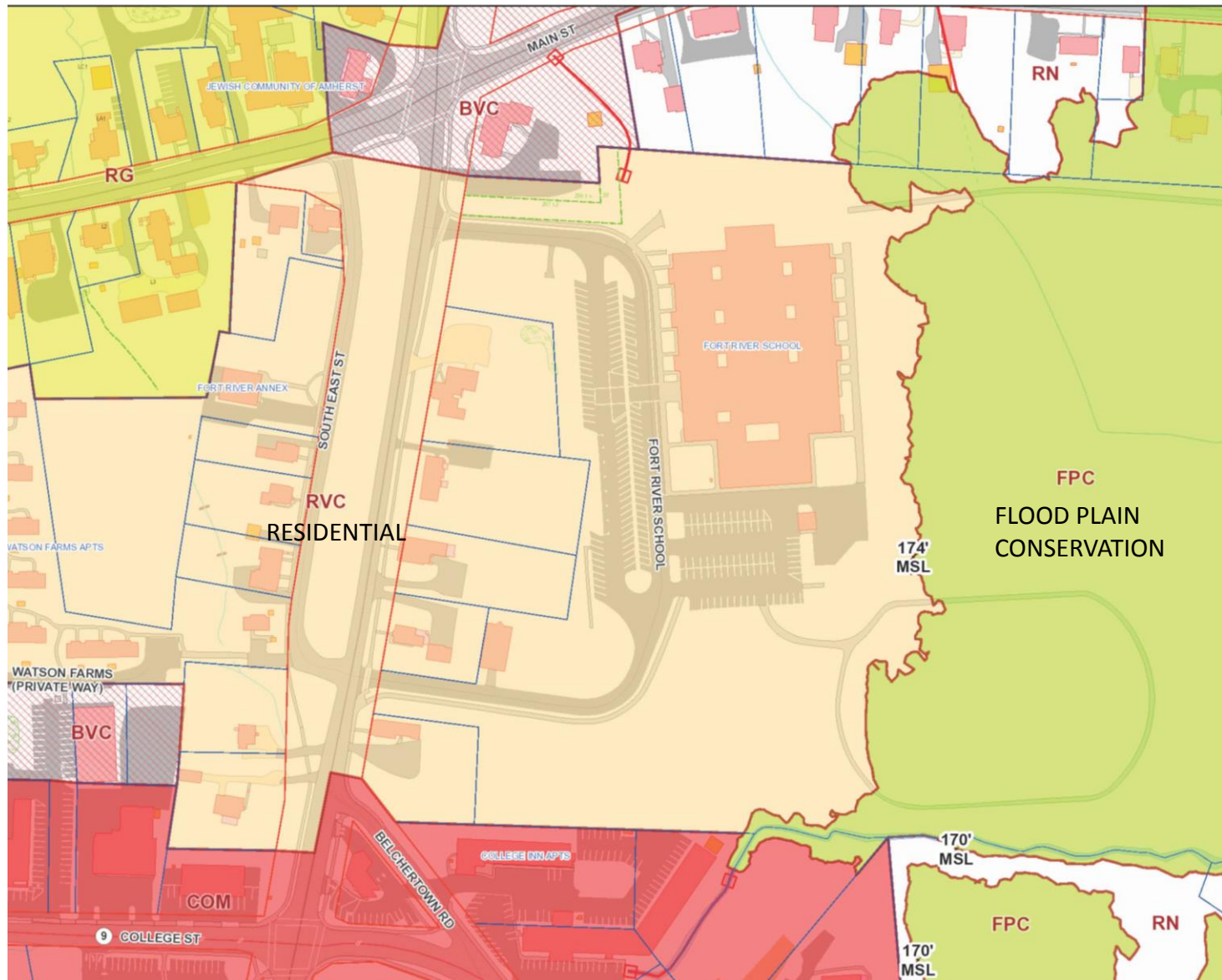
OPTION W8 - SECOND FLOOR PLAN (750 2-6) IS SIMILAR



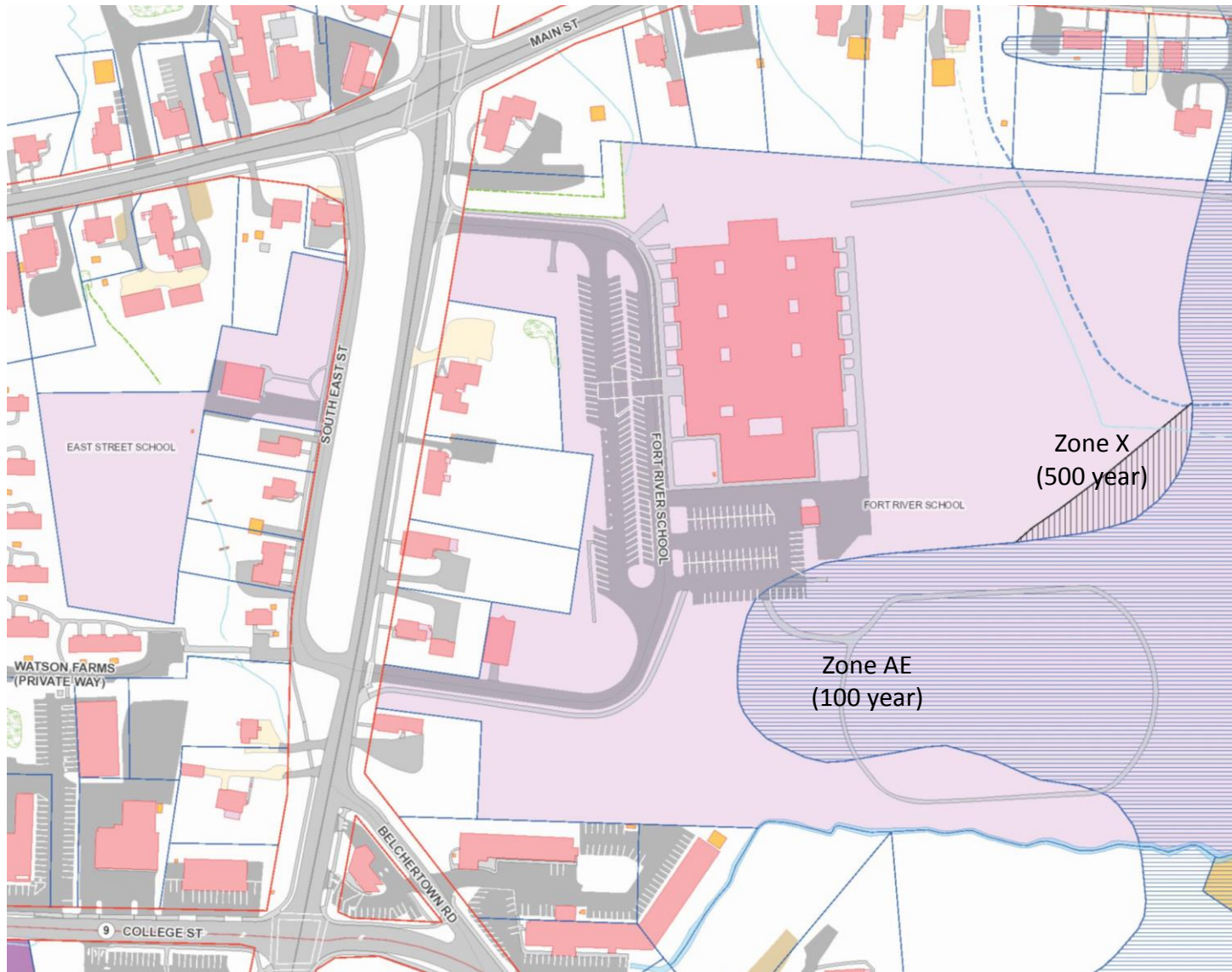
FORT RIVER SITE AERIAL



FORT RIVER SITE - ZONING

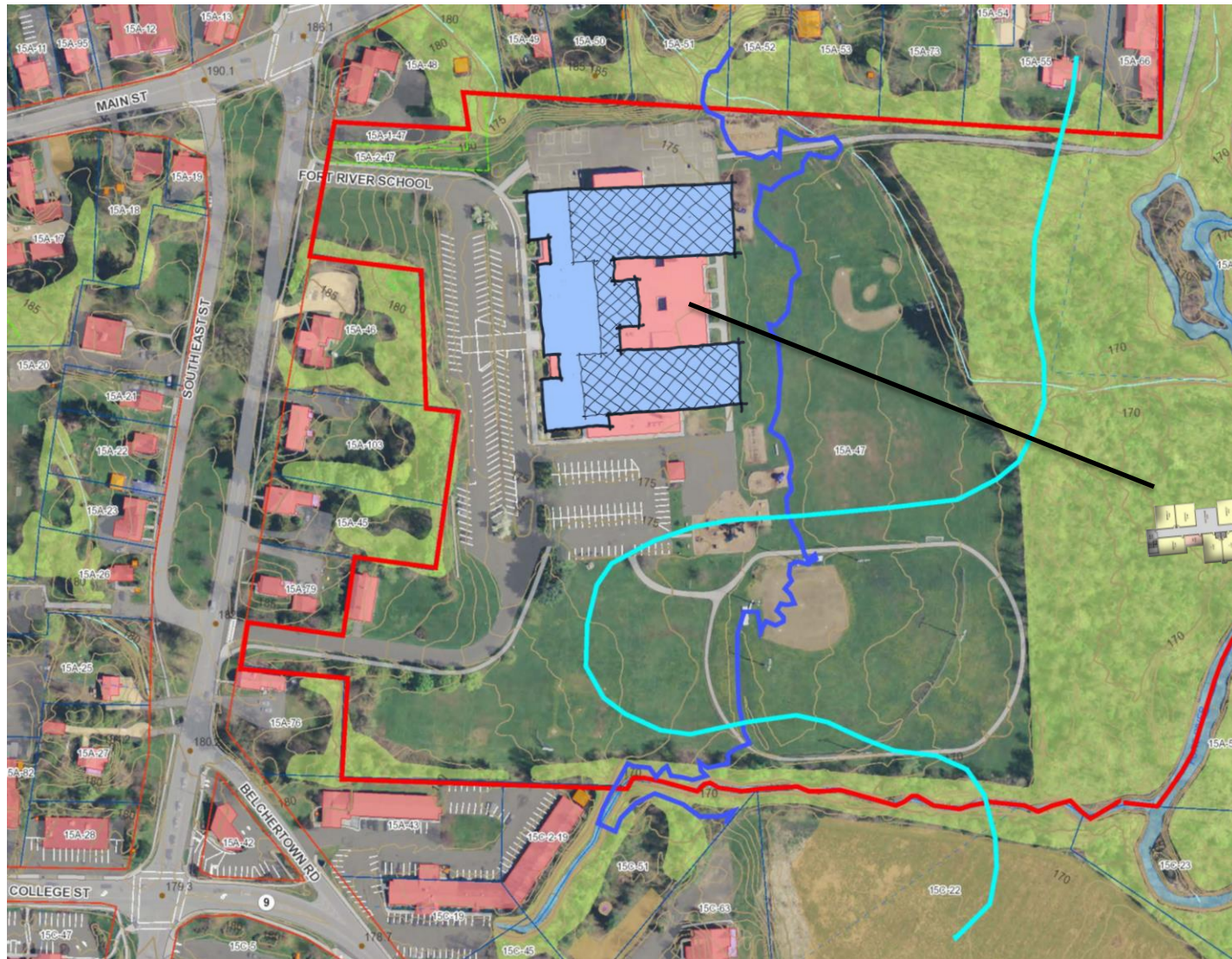


FORT RIVER SITE - FLOOD PLAIN/HYDROLOGY



OPTION FR3 - NEW FORT RIVER (750 2-6)

OPTION FR1 - NEW FORT RIVER (650 K-6) IS SIMILAR



THANK YOU!